

CRC[®]-25PET Communications

Manual Stock No. 9250-0129
Rev. C

July 13, 2016
2016/07/13

OWNER'S MANUAL

Capintec, Inc.
7 Vreeland Road
Florham Park, NJ 07932
Phone (800) ASK-4CRC
Fax (201) 825-1336

Copyright[®] 2006 Capintec, Inc.

[®]CRC is a registered trademark of Capintec, Inc.
U.S. Patents - 3,748,476 and 3,840,745

ALL RIGHTS RESERVED

Table of Contents

INTRODUCTION	5
INSTALLATION	5
From Capintec Web Site.....	5
From CD.....	5
CONNECTING THE CALIBRATOR	7
RS-232.....	7
USB.....	7
LICENSING	7
MAIN SCREEN	8
Data Acquisition.....	9
QC.....	9
QC History.....	9
Repeated Acquisition.....	9
Maximum Activity Acquisition.....	9
Archive.....	9
Setup.....	10
SETUP	10
Obtaining the License.....	11
Inputting the License.....	11
Report Header Frame.....	11
Communications Port Frame.....	11
Printer on PC Frame.....	12
Chambers Frame.....	12
Exiting Setup.....	12
DATA ACQUISITION	13
Change Nuclide.....	13
Update User Keys.....	14
Select Chamber Frame.....	14
Saving Data.....	14
Printing.....	15
Exporting.....	15
Exiting Data Acquisition.....	16
QC TEST	16
Selecting Chamber for Test Frame.....	17
Exiting QC Test.....	19
QC HISTORY	20
Chamber Selection.....	20
Test Selection.....	21

Printing21
 Save to File21
 Delete History21
 Exiting QC History21

REPEATED ACQUISITION22
 Chamber Selection22
 Setup for Repeated Acquisition23
 Entering Interval.....23
 Number of Measurements.....23
 Exiting Repeated Acquisition Setup23
 Starting Repeated Acquisition24
 Canceling Repeated Acquisition24
 Printing24
 Exporting24
 Exiting Repeated Acquisition25

MAXIMUM ACTIVITY ACQUISITION26
 Chamber Selection26
 Setup for Maximum Activity Acquisition27
 Entering Interval.....27
 Exiting Maximum Activity Setup27
 Starting Maximum Activity Acquisition27
 Stopping Maximum Activity Acquisition.....28
 Printing28
 Exporting28
 Exiting Maximum Activity Acquisition29

ARCHIVE.....30
 Creating an Archive30
 Opening an Archive31
 Viewing / Printing Archived Data.....32
 Exiting Archive.....32

IMPORTING A FILE INTO EXCEL32

INDEX

WARRANTY

INTRODUCTION

The CRC[®]-25PET Communications Program can communicate with the CRC[®]-25PET via RS-232 or USB ports.

INSTALLATION

Note: *Before proceeding, it is recommended that you close any applications you may be running. Setup cannot install system files or update shared files if they are in use.*

From Capintec Web Site

Click on the Download link.

If your browser gives you a choice of running or saving the file, select Save and save to your Desktop.

Click on the downloaded icon.

Follow directions as the program is installed.

From CD

Insert the CRC[®]-25PET Communications CD into your CD drive.

The CD is self-starting. If it does not start, perform the following steps:

Select Run... from the Start Menu.

Click the **B**rowse... button.

From the Look in: drop-down list, select *Communications (CD Drive)*.

Click on the file **setup.exe** to select it.

Click the **O**pen button.

Click the **O**K button.

The CRC-25PET Communications Setup window appears as shown in Figure 1.

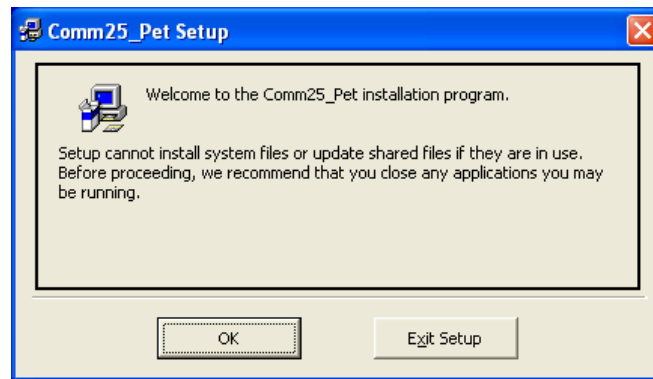


Figure 1 Install Screen 1

Click the **OK** button. Click the large setup icon (button) to begin the installation. Click the **Exit Setup** button to cancel the installation.

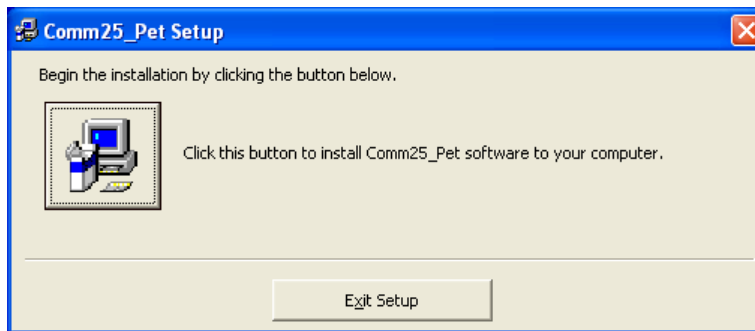


Figure 2 Install Screen 2

The CRC-25PET Communications – Choose Program Group Window appears.

Click the **C**ontinue button.

The Program begins to run through its setup procedure. Once Setup is completed successfully, Figure 3 will appear.



Figure 3 Install Screen 3

Click the **OK** button.

After the installation is complete, click the Start Menu, Programs, right-click on the Comm25_Pet icon and select *Create Shortcut*.

Drag one of the shortcuts to the Desktop.

Restart the computer.

CONNECTING THE CALIBRATOR

The calibrator must be connected to the PC and on the Chamber Measurement screen before starting the Communications program.

RS-232

Connect one end of the cable to the "RS-232" port on the rear panel of the Calibrator. Connect the other end of the cable to the Serial (Comm) port of the computer.

USB

Connect one end of the cable to the "PC" USB port on the side of the Calibrator. Connect the other end of the cable to a USB port on the computer.

LICENSING

A valid license is needed to communicate with the CRC[®]-25PET.

The license is tied to your PC's hard drive. The activation code and form for obtaining a license are accessed via the Setup Screen.

MAIN SCREEN

When the program is launched, Figure 4 Main Screen will appear. All functions are accessed from the Main Screen.

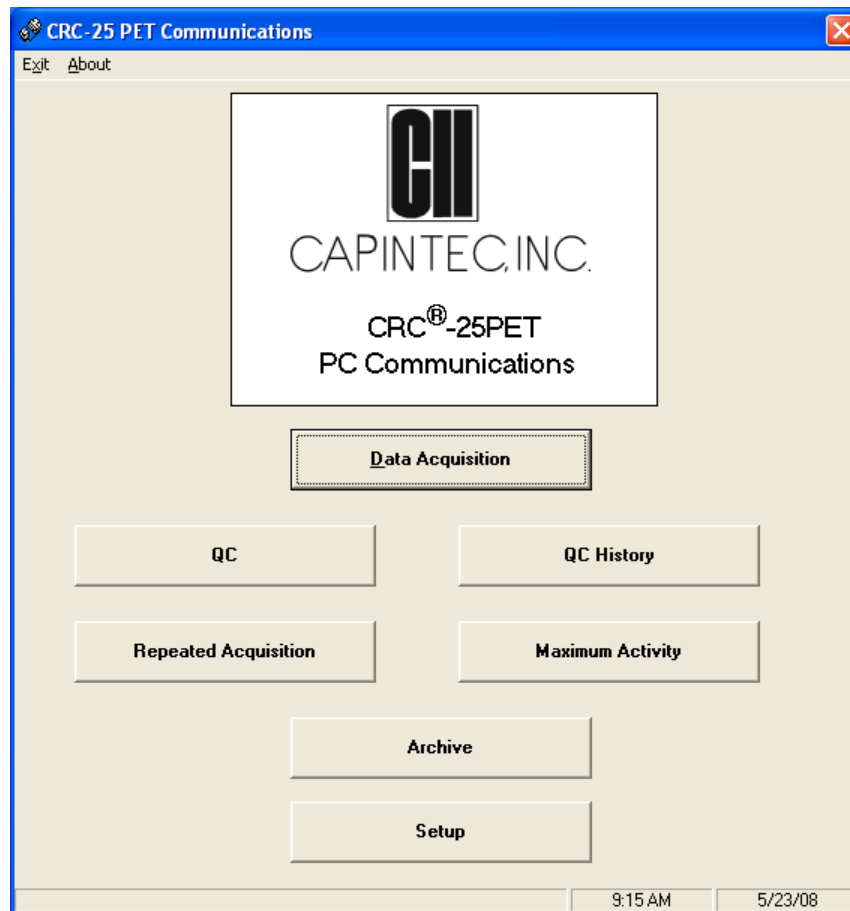


Figure 4 Main Screen

From the Main Screen, the following functions can be accessed:

- Data Acquisition
- QC
- QC History
- Repeated Acquisition
- Maximum Activity Acquisition
- Archive
- Setup

Data Acquisition

(Reference DATA ACQUISITION page 13 for operational instructions.)

This function reads and saves activity measured by the Chamber.

The Nuclide may be selected.

QC

(Reference QC TEST page 16 for operational instructions.)

This function allows the user to perform Daily Chamber Tests and saves the data.

QC History

(Reference QC HISTORY page 20 for operational instructions.)

This function allows the user to view, print and manage saved QC data history.

Repeated Acquisition

(Reference REPEATED ACQUISITION page 22 for operational instructions.)

The nuclide and activity are displayed and updated at time intervals set by the user and for the number of measurements set by the user. The data for each interval are automatically saved and may be printed or exported to Excel.

Maximum Activity Acquisition

(Reference MAXIMUM ACTIVITY ACQUISITION page 26 for operational instructions.)

The nuclide and activity are displayed and updated at time intervals set by the user. The maximum activity will also be displayed. The data acquisition must be stopped by the user. The maximum activity will be automatically saved and may be printed or exported to Excel.

Archive

(Reference ARCHIVE page 30 for operational instructions.)

This function allows the user to save the current database and access previously saved databases for viewing and printing.

Setup

(Reference *SETUP* page 10 for operational instructions.)

This function is used to:

- obtain the data needed to attain a license,
- generate the License Request Form,
- input the License information,
- input the Report Header information,
- to select communications port,
- specify if a printer is attached to the computer (PC), and
- select the number of Chambers attached to the calibrator.

SETUP

From Figure 4 Main Screen, click the **Setup** button. Figure 5 Setup Screen will appear.

Setup
CRC - 25 Pet Communications Version 1.1

License
Activation Code: 8C74
Enter License:
License Request Form

Report Header

Communications Port
 USB
 Comm 1 Comm 3
 Comm 2 Comm 4

Printer on PC
 Yes
 No

Chambers
 1 Chamber
 2 Chambers

Cancel **Done**

Figure 5 Setup Screen

Obtaining the License

The program's license is tied to your computer's hard drive. An example activation code is shown below in Figure 6.



The License Frame dialog box has a title bar labeled "License". Inside, it displays "Activation Code: 2FDB". Below this is a label "Enter License" followed by an empty text input field. At the bottom center of the dialog is a button labeled "License Request Form".

Figure 6 License Frame

Click the **License Request Form** button to print a form containing the information necessary to obtain a license. Contact the Capintec Sales department at (800) ASK-4CRC to order your license. You will be given a License code that will work only with **your** computer.

Note: A printer attached to your computer is required to obtain the License Request Form.

Inputting the License

Enter the License Code making sure that you enter the License with upper case letters. If the license is correctly entered, you will be able to obtain data from the CRC[®]-25PET.

Report Header Frame

Up to 40 characters per line may be entered in these 5 fields. The report header will be printed on all the reports.

Communications Port Frame

The CRC[®]-25PET can communicate with a PC via RS-232 or USB.



The Communications Port dialog box has a title bar labeled "Communications Port". It contains four radio button options: "USB", "Comm 1", "Comm 2", and "Comm 3". The "Comm 1" option is selected, indicated by a filled radio button. "Comm 4" is not visible in the image.

Figure 7 Communications Port Frame

Comm 1 is set as the default. If you want to use the USB port or another RS-232 port for communications with the CRC[®]-25PET, select that port. The port will be set up when the **Done** button is pressed.

Printer on PC Frame

Reports may be printed from this program if a printer is connected to your PC. On first startup, it is assumed that there is no printer.



Figure 8 Printer on PC Frame

Click the **Yes** radio button if a printer is connected to the PC. This will enable the **Print** buttons throughout the program.

Chambers Frame

One or two Chambers may be connected to a CRC[®]-25PET Calibrator. This frame (refer to Figure 9) allows the program to be set for one or two Chambers.

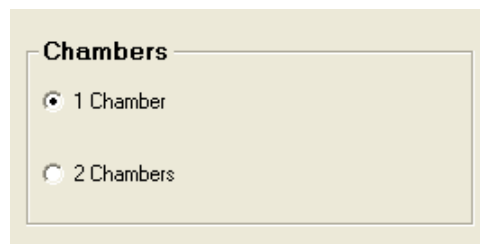


Figure 9 Chambers Frame

Select the appropriate radio button for the number of Chambers attached to the calibrator.

Exiting Setup

To exit Setup and save the entries, click the **Done** button.

To exit Setup without saving entries, click the **Cancel** button.

DATA ACQUISITION

From Figure 4 Main Screen, click the **Data Acquisition** button. Figure 10 Data Acquisition Screen will appear.

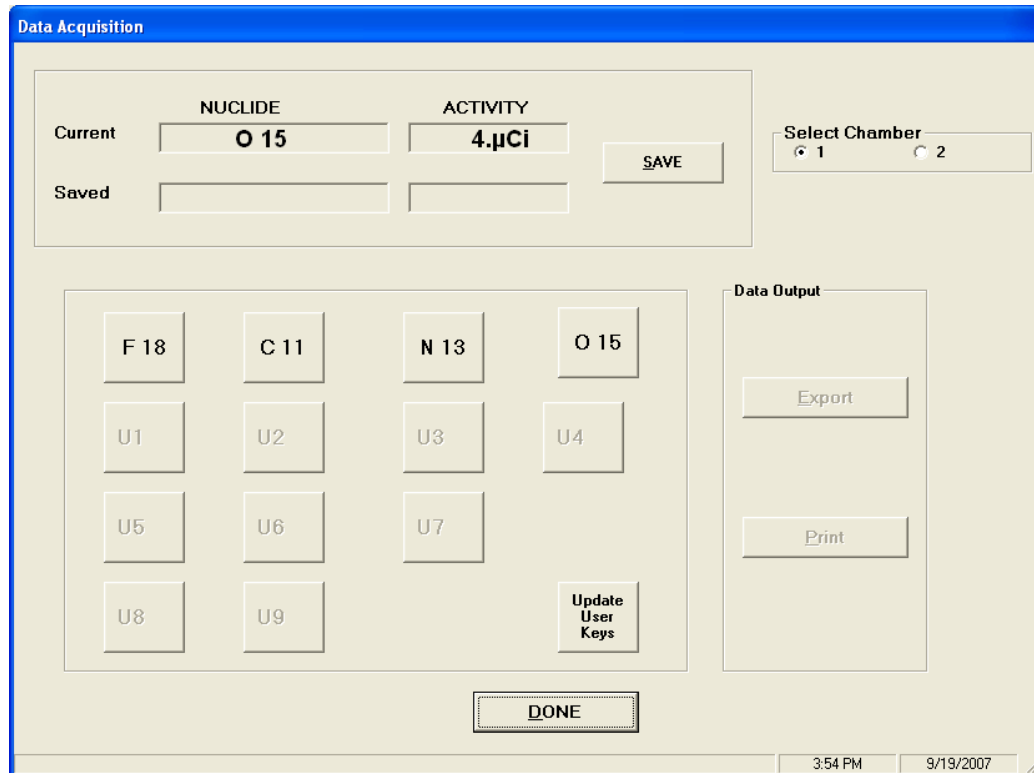


Figure 10 Data Acquisition Screen

The activity and nuclide are automatically acquired every second for the selected Chamber. Data Acquisition begins when the Data Acquisition screen is displayed. The current calibrator reading is displayed.

The Pre-set Nuclide and User keys are displayed on the Data Acquisition screen. The nuclide may be changed from the PC and the User keys will display the assigned nuclide.

When the Data Acquisition screen is accessed, the Calibrator sends the names of the nuclides assigned to the User Keys to the PC. These names are displayed on the User keys on the Data Acquisition screen. If a User Key does not have a nuclide assigned to it, the key will not be active (grayed out).

Change Nuclide

The nuclide on the calibrator can be changed from the PC program by clicking one of the Pre-Set Nuclide keys or a User key shown on Figure 10. The data for the new nuclide will be displayed.

Update User Keys

If the assignment for any User key on the calibrator is changed, click the **Update User Keys** button so that the User keys on the PC program will reflect the assignments on the calibrator.

Select Chamber Frame

Note: *If only one Chamber was chosen in the “Chambers” frame in the Setup Module, the Select Chamber Frame will not be displayed.*

To change the Chamber being read, click on the appropriate radio button for Chamber 1 or 2.

Saving Data

To save the measurement for printing or exporting, click the **SAVE** button.

The nuclide name and activity will appear in the Saved Nuclide and Activity boxes as shown in Figure 11 Saved Data Acquisition Screen.

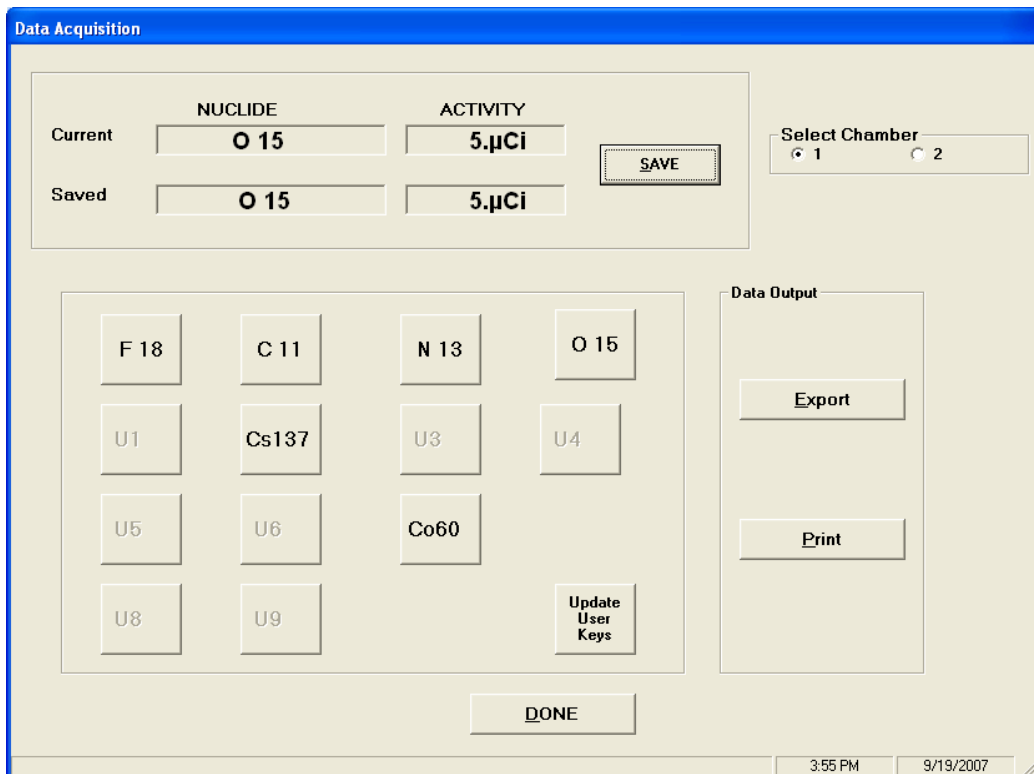


Figure 11 Saved Data Acquisition Screen

Each time the **S**AVE button is pressed, the current data is added to the previously saved data.

Once the **D**ONE button is pressed, the saved data is erased.

If you wish to retain the saved data, you must either print it or export it to a file. The **P**rint and **E**xport buttons will become active after the **S**AVE button is pressed.

Printing

Note: The **P**rint button is not active until the **S**AVE button is pressed. (The **P**rint button will never be active if the "Printer on PC" is set to No in the Setup Module.)

Click the **P**rint button for a printout of the saved data. After printing, you will be asked if you want to retain the data. Click the **Y**es button to retain the data.

If the **N**o button is pressed, all saved data will be erased and the **P**rint button will become inactive.

Exporting

Note: The **E**xport button is not active until the **S**AVE button is pressed.

Click the **E**xport button to create a file of the saved data that may be used in Excel or a similar program. (The default save folder is C:\CRC-25 Communications\Data. The default file extension is .xls) Figure 12 Default Extension is xls Screen will appear.

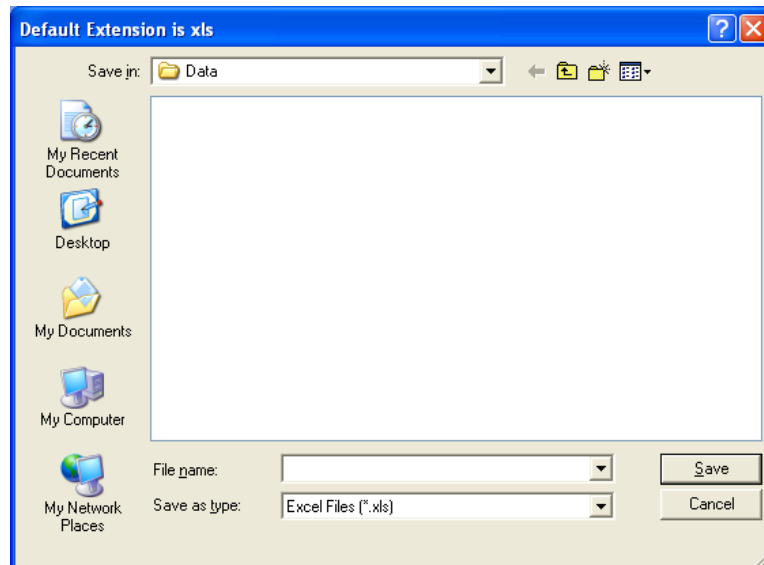


Figure 12 Default Extension is xls Screen

Type a name in the **F**ile **n**ame: drop-down box and press the **S**ave button.

After exporting, you will be asked if you want to retain the data. Click the **Yes** button to retain the data.

If the **No** button is pressed, all saved data will be erased and the **Export** button will become inactive.

Exiting Data Acquisition

Click the **DONE** button or press the *Esc* key to exit the Data Acquisition screen and return to Figure 4 Main Screen.

QC TEST

This module is used to step the Chamber through the Daily Chamber Test. The following test will be performed:

- Auto Zero
- Background
- Chamber Voltage
- Data Check
- Accuracy Test (if Test Source(s) are setup)

From Figure 4 Main Screen, click the **QC** button. Figure 13 QC Test Screen will appear.

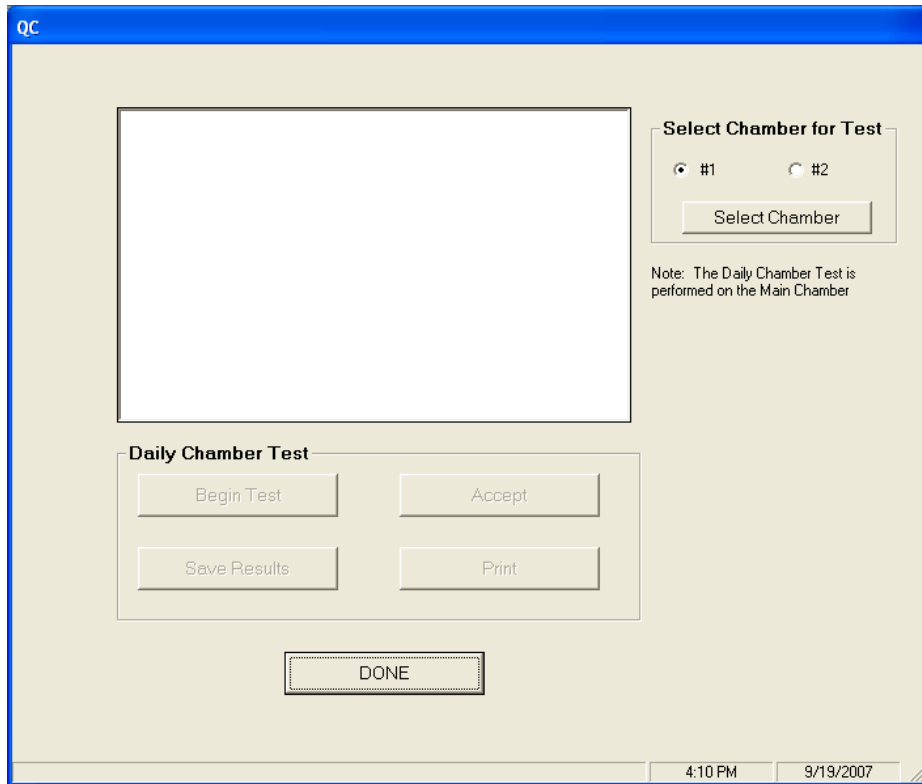


Figure 13 QC Test Screen

Note: The calibrator must be on the Chamber Measurement screen before beginning the test.

Selecting Chamber for Test Frame

Note: If only one Chamber was chosen in the “Chambers” frame in the Setup Module, the Select Chamber Frame will not be displayed.

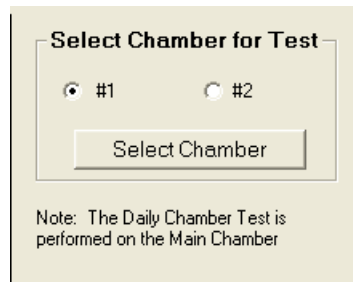


Figure 14 Selection of Chamber for Daily Test

The Daily Chamber Test is performed on the selected chamber only.

The Chamber must be selected before performing the test.

- Click on the correct Chamber radio button in Figure 14 Selection of Chamber for Daily Test.
- Click the **Select Chamber** button. The calibrator display will change to the selected Chamber before the test begins.
- After the Chamber is selected, the **Begin Test** button will be enabled as shown in Figure 15 Daily Chamber Test Frame.

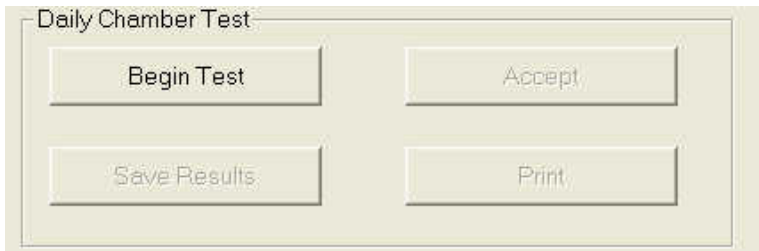


Figure 15 Daily Chamber Test Frame

The Daily Chamber Test Frame is used to step through the Daily Test for the selected Chamber (the Chamber displayed on the calibrator readout).

To start the test, click the **Begin Test** button. Figure 16 Remove Sources Screen will appear.

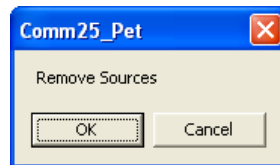


Figure 16 Remove Sources Screen

Remove all sources from the vicinity of the Chamber and click the **OK** button.

To abort the Daily Chamber Test, click the **Cancel** button.

When each section of the test is finished, the **Accept** button will be activated. Click the **Accept** button to continue to the next part of the test.

If Test Sources have been input, Figure 17 Measure Sources Screen will appear for each source; otherwise a "NO SOURCES" message will appear on the screen and the test is complete.

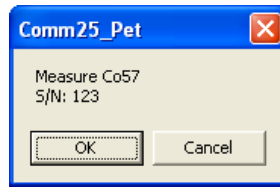


Figure 17 Measure Sources Screen

When the test is complete, the **Save Results** and **Print** (if the "Printer on PC" is set to Yes in the Setup Module) buttons will be enabled.

Click the **Print** button to print a report for this test.

Click the **Save Results** button to save the data to the database for future viewing and printing in QC History (refer to QC HISTORY section on page 20).

Exiting QC Test

Click the **DONE** button or press the *Esc* key to exit the QC Test Screen.

QC HISTORY

This module allows the user to view, print, save to file or delete the QC History.

From Figure 4 Main Screen, click the **QC History** button. Figure 18 QC History Screen will appear.

The screenshot shows a window titled "QC History" with a blue header. Inside, there is a table for "Chamber # 1" with columns: Date/Time, Zero, Background, and Chamber Voltage. Below the table are control elements: a "Selection" group with radio buttons for "Daily" (selected) and "Accuracy"; a "Select Chamber" group with radio buttons for "#1" (selected) and "#2"; and four buttons: "Print", "Delete History", "Save to File", and "Done".

Chamber # 1			
Date/Time	Zero	Background	Chamber Voltage
9/20/2007 09:00	0.00 mV	0.67 μ Ci	489.9V
9/20/2007 08:50	0.03 mV	0.81 μ Ci	490.0V
9/20/2007 08:41	0.00 mV	0.95 μ Ci	490.1V

Figure 18 QC History Screen

Chamber Selection

Note: *If only one Chamber was chosen in the "Chambers" frame in the Setup Module, the Select Chamber Frame will not be displayed.*

Select the Chamber whose history is to be viewed as shown in Figure 19 QC Chamber Selection Frame.

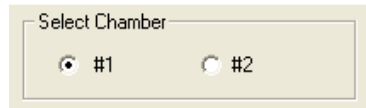


Figure 19 QC Chamber Selection Frame

Test Selection

Data from Daily Chamber and Accuracy Tests may be displayed.

To change the selection, click on the desired radio button as shown in Figure 20 QC Test Selection Frame.

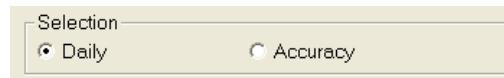


Figure 20 QC Test Selection Frame

Printing

Note: The **Print** button will not be active if the “Printer on PC” is set to No in the Setup Module)

The displayed QC History data may be printed. To print a report of the displayed data, click the **Print** button.

Save to File

The displayed QC History data may be saved to a file. To save the data to a file, click the **Save to File** button.

Delete History

The **Delete History** button is only active when Daily is selected. It is not active when Accuracy is selected.

To delete the history, click the **Delete History** button. The Daily Test and Accuracy Test data for the Chamber will be deleted.

Exiting QC History

Click the **Done** button or press the *Esc* key to exit the QC History Screen.

REPEATED ACQUISITION

Repeated Acquisition is used to acquire data at a constant time interval for a given number of measurements.

From Figure 4 Main Screen, click the **Repeated Acquisition** button. Figure 21 Repeated Acquisition Screen will appear.

Repeated Acquisition

Setup

Select Chamber

#1 #2

Data Acquisition

Isotope: F 18

Activity:

Acquisition:

Start Cancel

Data Output

Export Print

Done

8:40 AM 9/24/2007

Figure 21 Repeated Acquisition Screen

Chamber Selection

Note: If only one Chamber was chosen in the “Chambers” frame in the Setup Module, the Select Chamber Frame will not be displayed.

Select the Chamber whose history is to be viewed as shown in Figure 22 Chamber Selection Frame.

Select Chamber

#1 #2

Figure 22 Chamber Selection Frame

Setup for Repeated Acquisition

Click the **Setup** button to display Figure 23 Repeated Acquisition Setup Screen.

The Repeated Acquisition Setup Screen is used for entering the parameters needed to acquire repeated data.

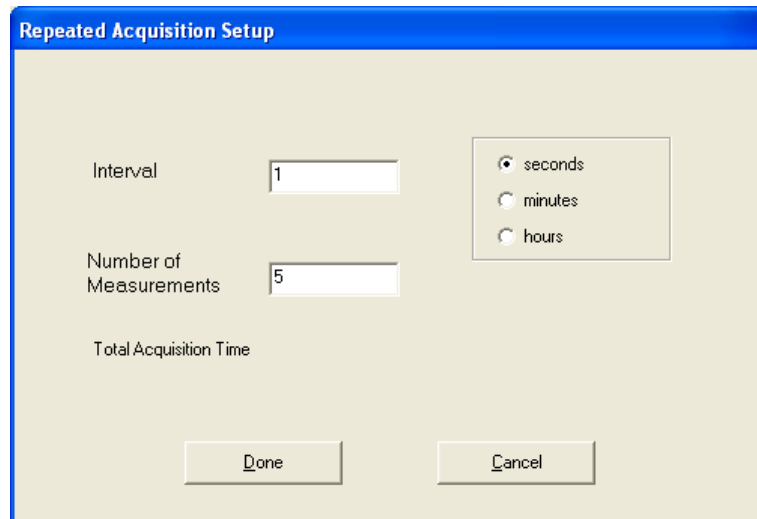


Figure 23 Repeated Acquisition Setup Screen

Entering Interval

The default value for the interval between measurements is 1 second.

To change this value, input the desired interval in seconds, minutes or hours (integral seconds, minutes or hours only).

Number of Measurements

Input the desired number of measurements. The Total Acquisition time will then be displayed.

Exiting Repeated Acquisition Setup

Click the **Done** button to exit Repeated Acquisition Setup and save the values.

Click the **Cancel** button to exit Repeated Acquisition Setup without saving the values.

Figure 21 Repeated Acquisition Screen will re-appear.

Starting Repeated Acquisition

Click the **S**tart button to begin the acquisition.

Data is read from the calibrator at the requested interval for the requested number of measurements. The Isotope, Activity and Acquisition number are displayed.

When the acquisition is complete, the time, Isotope and Activity for each measurement are saved for output and the **E**xport and **P**rint buttons become active.

***Note:** The **P**rint button will not be active if the "Printer on PC" is set to No in the Setup Module)*

Canceling Repeated Acquisition

Click the **C**ancel button to stop the acquisition before all the requested measurements have been made.

Printing

***Note:** The **P**rint button will not be active if the "Printer on PC" is set to No in the Setup Module)*

Click the **P**rint button for a printout of the measurements. After printing, you will be asked if you want to retain the data. Click the **Y**es button to retain the data.

If the **N**o button is pressed, all saved data will be erased and the **P**rint button will become inactive.

Exporting

Click the **E**xport button to create a file of the measurements that may be used in Excel or a similar program. (The default save folder is C:\CRC-25 Communications\Data. The default file extension is .xls) Figure 24 Default Extension is xls Screen will appear.

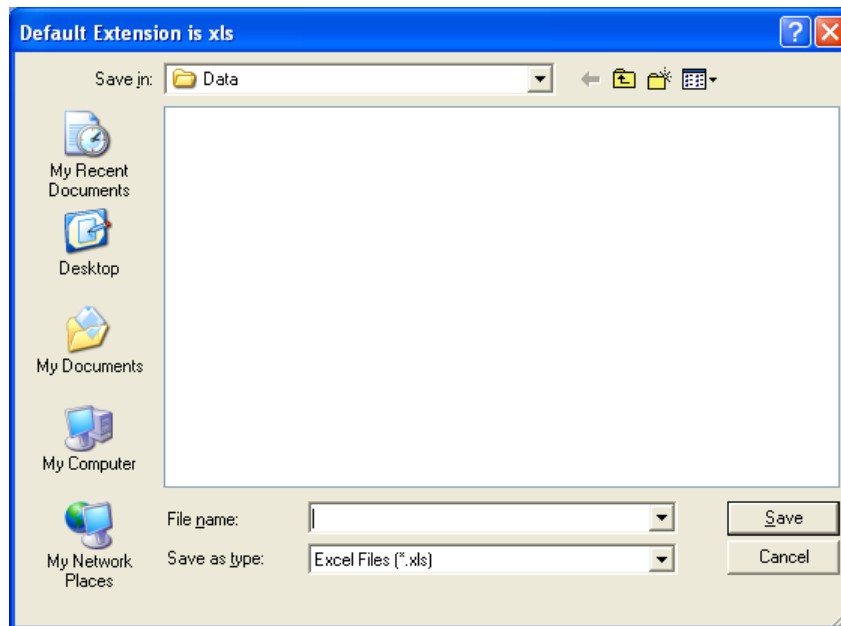


Figure 24 Default Extension is xls Screen

Type a name in the File name: drop-own box and click the **Save** button.

After exporting, you will be asked if you want to retain the data. Click the **Yes** button to retain the data.

If the **No** button is pressed, all saved data will be erased and the **Export** button will become inactive.

Exiting Repeated Acquisition

Click the **Done** button or press the *Esc* key to exit the Repeated Acquisition screen.

All saved data will be erased upon exiting the Repeated Acquisition screen.

MAXIMUM ACTIVITY ACQUISITION

Maximum Activity Acquisition is used to perform repeated data acquisitions and save the maximum activity for the set acquisition time period.

From Figure 4 Main Screen, click the **Maximum Activity** button. Figure 25 Maximum Activity Acquisition Screen will appear.

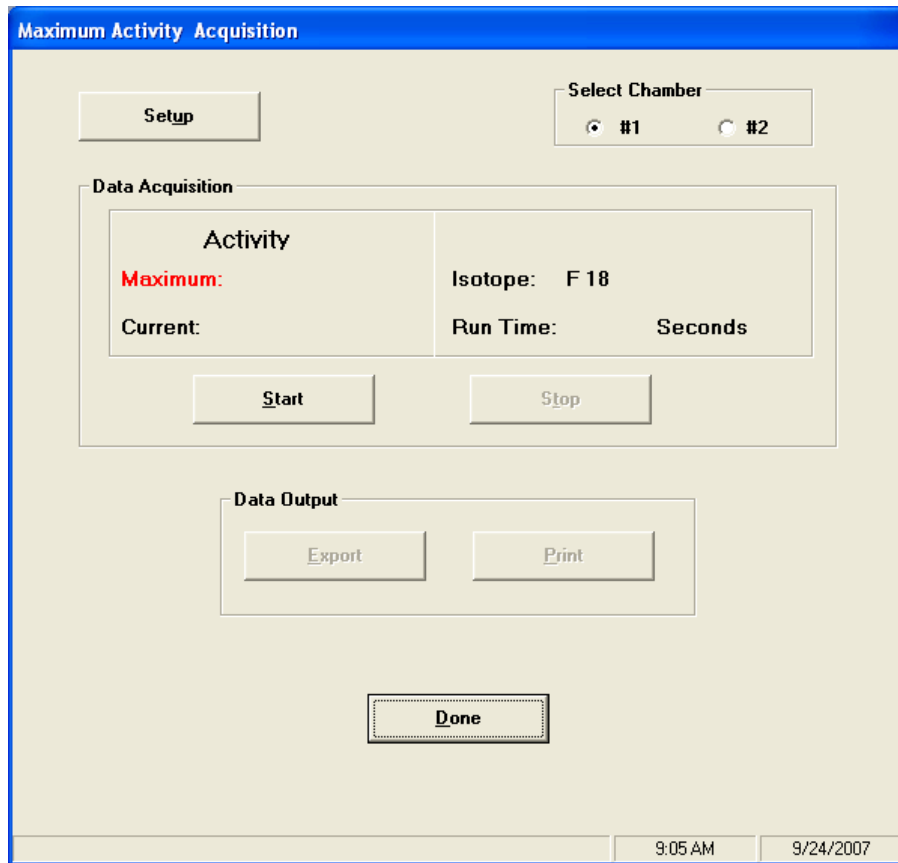


Figure 25 Maximum Activity Acquisition Screen

Chamber Selection

Note: If only one Chamber was chosen in the “Chambers” frame in the Setup Module, the Select Chamber Frame will not be displayed.

Select the Chamber whose history is to be viewed as shown in Figure 26 Chamber Selection Frame.



Figure 26 Chamber Selection Frame

Setup for Maximum Activity Acquisition

Click the **Setup** button to display Figure 27 Maximum Activity Setup Screen.

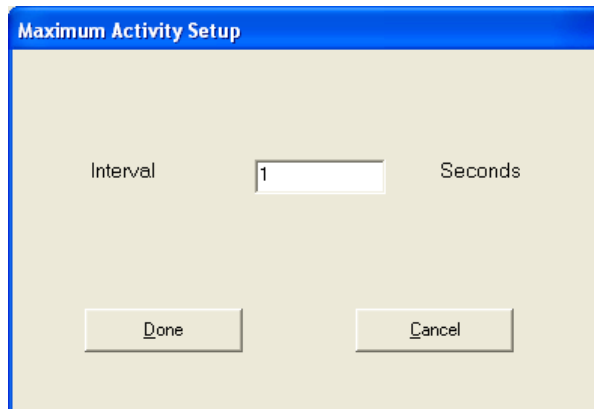


Figure 27 Maximum Activity Setup Screen

Entering Interval

The default value for the interval between measurements is 1 second.

To change this value, input the desired interval in seconds (integral seconds only)

Exiting Maximum Activity Setup

Click the **Done** button to exit Maximum Activity Setup and save the values.

Click the **Cancel** button to exit Maximum Activity Setup without saving the values.

Figure 25 Maximum Activity Acquisition Screen will re-appear.

Starting Maximum Activity Acquisition

Click the **Start** button to begin the acquisition.

Data will be read from the chamber at the requested interval. The Isotope, Maximum Activity since the data acquisition began and the Current Activity will be displayed. The Run Time (time since the data acquisition began) will also be displayed.

Stopping Maximum Activity Acquisition

Click the **S**top button to terminate the Maximum Activity Acquisition and save the maximum activity.

When the acquisition is stopped, the time, Isotope and Activity are saved for output and the **E**xport and **P**rint buttons become active.

Note: *The **P**rint button will not be active if the “Printer on PC” is set to No in the Setup Module)*

Printing

Note: *The **P**rint button will not be active if the “Printer on PC” is set to No in the Setup Module)*

Click the **P**rint button for a printout of the maximum activity for each set of measurements. After printing, you will be asked if you want to retain the data. Click the **Y**es button to retain the data.

If the **N**o button is pressed, all saved data will be erased and the **P**rint button will become inactive.

Exporting

Click the **E**xport button to create a file of the maximum activities that may be used in Excel or a similar program. (The default save folder is C:\CRC-25 Communications\Data. The default file extension is .xls) Figure 28 Default Extension is xls Screen will appear.

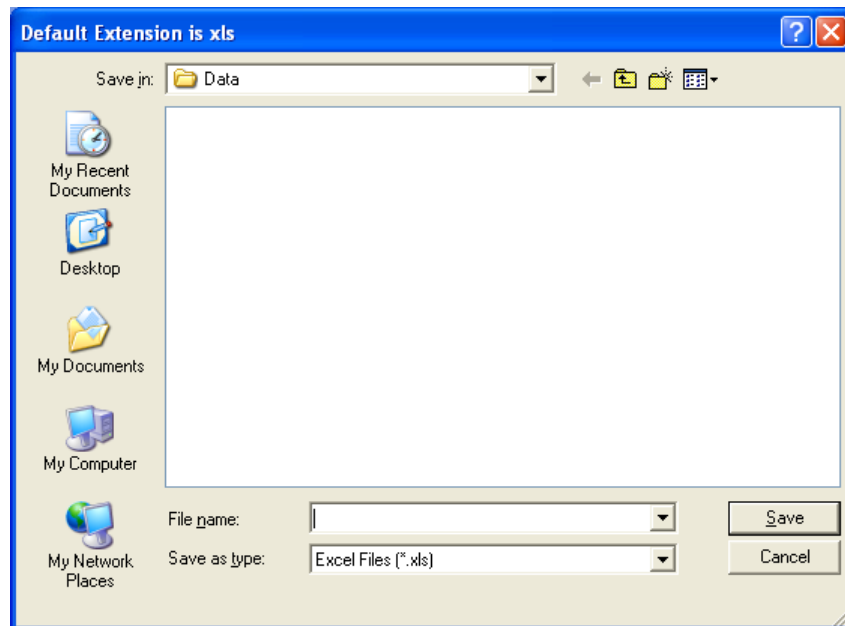


Figure 28 Default Extension is xls Screen

Type a name in the File name: drop-down box and click the **Save** button.

After exporting, you will be asked if you want to retain the data. Click the **Yes** button to retain the data.

If the **No** button is pressed, all saved data will be erased and the **Export** button will become inactive.

Exiting Maximum Activity Acquisition

Click the **Done** button or press the *Esc* key to exit the Maximum Activity Acquisition screen.

All saved data will be erased upon exiting the Maximum Activity Acquisition screen.

ARCHIVE

From Figure 4 Main Screen, click the **Archive** button. Figure 29 Archive Screen will appear.

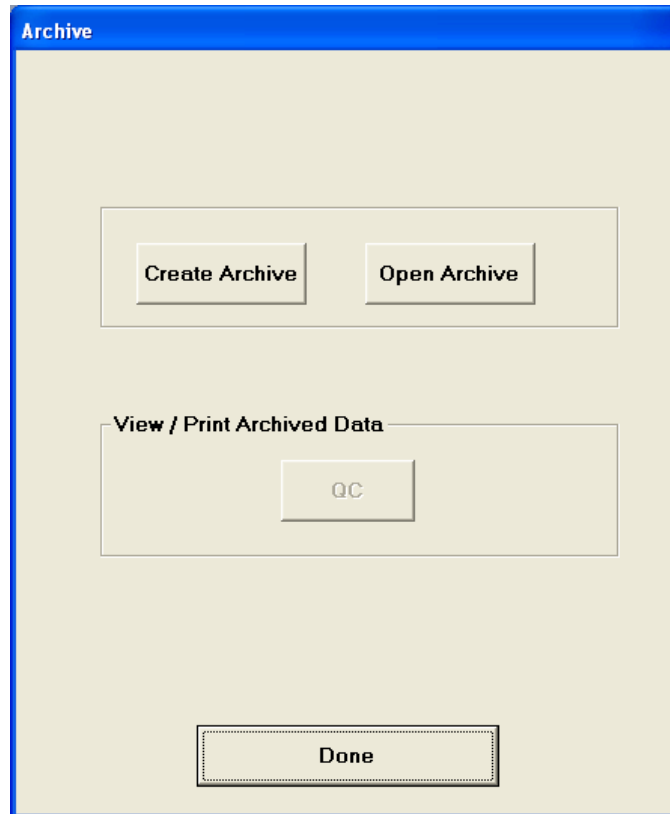


Figure 29 Archive Screen

Archive is used to save the current database and to access previously saved databases. All archived databases are in the sub-folder Archive.

Archive should always be performed before deleting QC data.

Creating an Archive

To create a new archive (save the current database) click the **Create Archive** button. Figure 30 Create Archive Dialog Screen will appear:

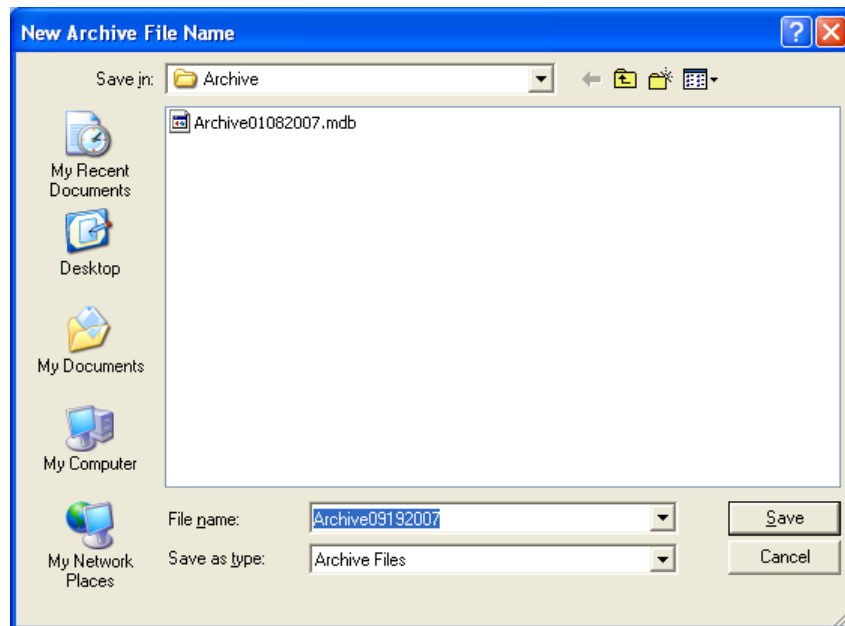


Figure 30 Create Archive Dialog Screen

The previously archived databases will be shown.

The file name will default to the word "Archive" followed by the current date in format MMDDYYYY. The filename may be changed, but the folder cannot be changed.

When the correct file name is displayed, click on the **Save** button.

Figure 29 Archive Screen will re-appear with the full name of the created archive file displayed on the top of the screen.

Opening an Archive

To open a previously archived database, from Figure 29 Archive Screen, click on the **Open Archive** button. Figure 31 Open Archive Dialog Screen will appear.

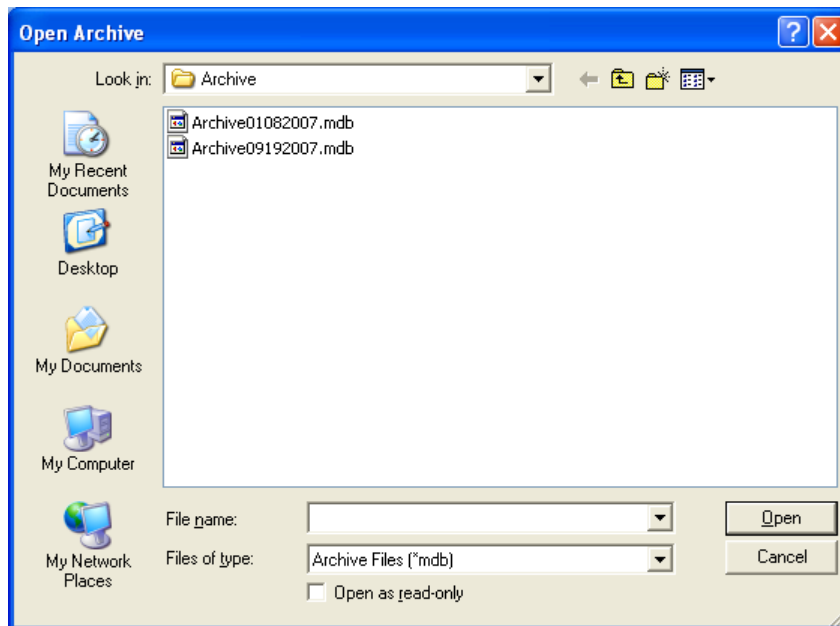


Figure 31 Open Archive Dialog Screen

The previously archived databases will be shown. Click on the database to be opened. The selected database's name will appear in the File name text box. Click the **Open** button to open the database.

Figure 29 Archive Screen will re-appear with the name of the opened archive displayed on the top of the screen and the **QC** button will be enabled.

Viewing / Printing Archived Data

After an archived database is opened, you may view and print the archived data by clicking on the **QC** button.

The screen will be the same as Figure 18 QC History Screen.

Exiting Archive

Click the **Done** button or press the *Esc* key to exit the Archive Screen.

If an archived file has been opened, it will be closed and the current database will be opened.

IMPORTING A FILE INTO EXCEL

Data that has been exported to Excel is in a format that is easy for Excel to read. However, a few steps must be performed before accessing the data.

1. Open Excel and select the exported file (25test.xls in the example). Figure 32 will appear.

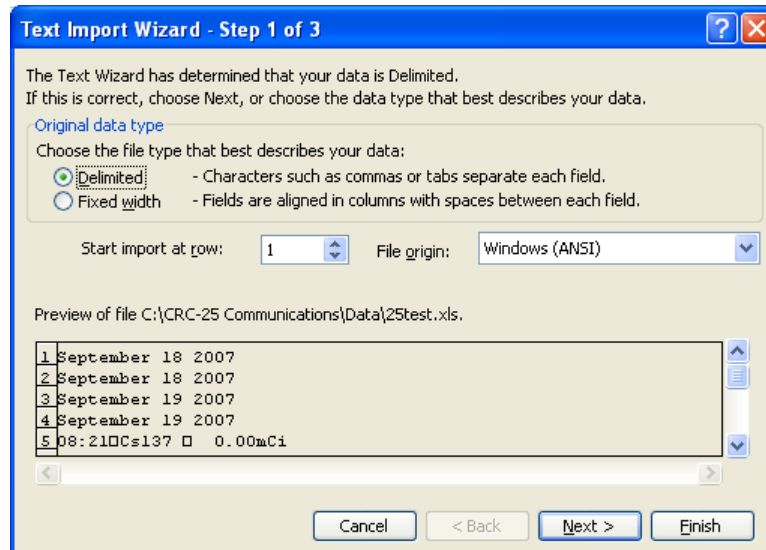


Figure 32

2. Verify that the Delimited radio button is selected and the File orin: drop-down box is set to *Windows (ANSI)*. Click the Next> button. Figure 33 will appear.

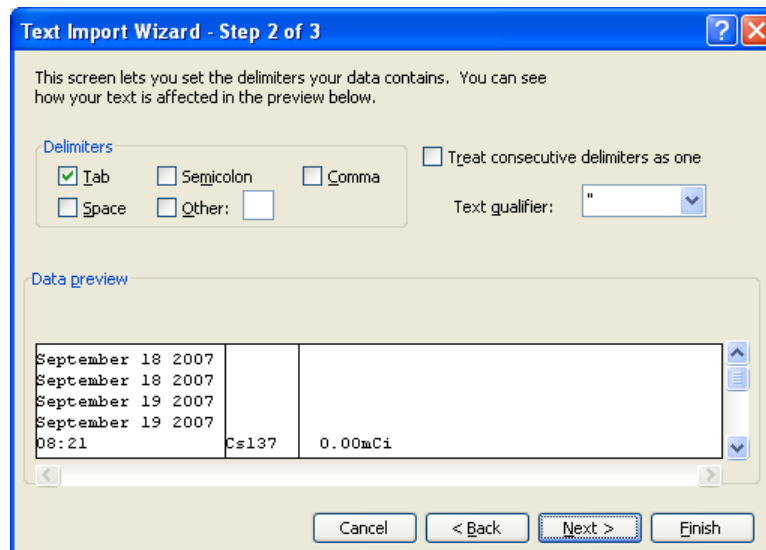


Figure 33

3. Verify that the options are set as above. Click the Next> button. Figure 34 will appear.

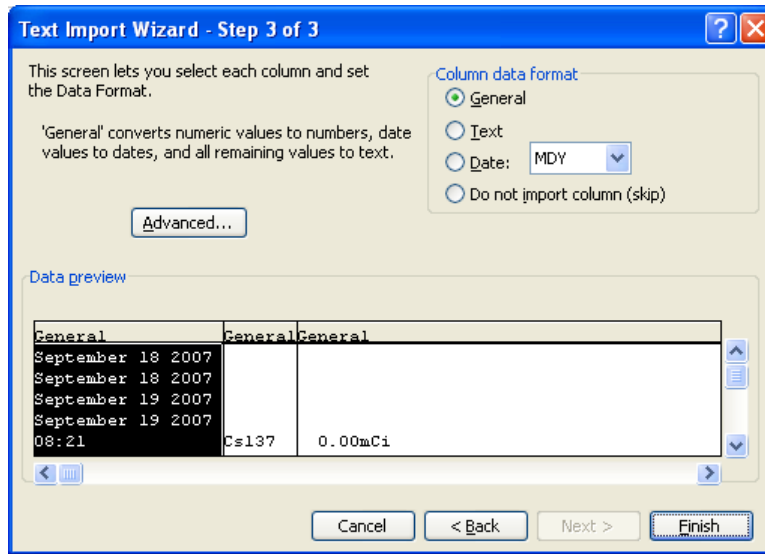


Figure 34

- Click the **Finish** button. The spreadsheet will appear as shown in Figure 35.

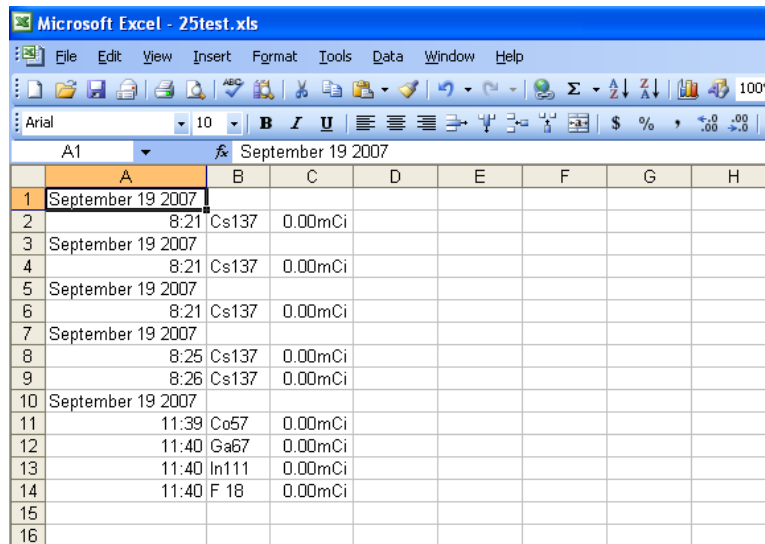


Figure 35

- If you want a heading for the data, highlight the first row and select **R**ows from the **I**nsert Menu. Refer to Figure 36.

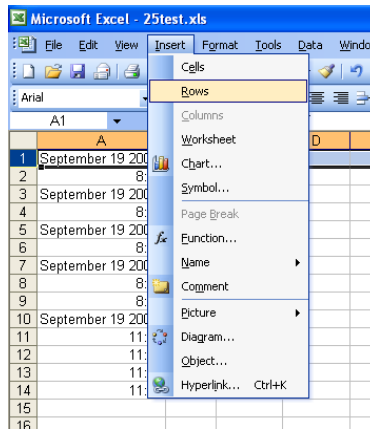


Figure 36

6. Type the heading in the row that is opened in front of the current row 1. Refer to Figure 37

	A	B	C	D
1	This data was obtained with the CRC-25W			
2	September 19 2007			
3	8:21	Cs137	0.00mCi	
4	September 19 2007			
5	8:21	Cs137	0.00mCi	
6	September 19 2007			
7	8:21	Cs137	0.00mCi	
8	September 19 2007			
9	8:25	Cs137	0.00mCi	
10	8:26	Cs137	0.00mCi	
11	September 19 2007			
12	11:39	Co57	0.00mCi	
13	11:40	Ga67	0.00mCi	
14	11:40	In111	0.00mCi	
15	11:40	F 18	0.00mCi	
16				

Figure 37

Index

A

activation code, 11
Archive, 30
 Creating, 30
 Exiting, 32
 function, 9
 Opening, 31
Archived Data
 Printing, 32
 Viewing, 32

C

Chamber Selection
 Maximum Activity Acquisition, 26
 QC History, 20
 Repeated Acquisition, 22
Chambers Frame, 12
Change Nuclide, 13
communications port, 10
Communications Port, 11
Connection
 Calibrator, 7
Creating an Archive, 30

D

Daily Chamber Test, 16
Data Acquisition, 13
 Exiting, 16
 Exporting, 15
 function, 9
 Printing, 15
 Saving Data, 14
Delete History
 QC, 21

E

Excel
 Importing a file, 32
Exiting
 Maximum Activity Acquisition, 29
 Maximum Activity Acquisition Setup, 27
 Repeated Acquisition Setup, 23
Exiting Archive, 32

Exiting QC History, 21
Exiting QC Test, 19
Exporting
 Data Acquisition, 15
 Maximum Activity Acquisition, 28
 Repeated Acquisition, 24

F

Functions
 Archive, 9
 Data Acquisition, 9
 Program, 8
 QC, 9
 QC History, 9
 Setup, 10

I

Importing to Excel, 32
Installation, 5
 from CD, 5
 from Web Site, 5
Interval
 entering, 23, 27

L

License, 10
 inputting, 11
 obtaining, 11
License Request Form, 10
Licensing, 7

M

Maximum Activity Acquisition
 Chamber Selection, 26
Maximum Activity Acquisition, 9, 26
 Entering Interval, 27
 Exiting, 29
 Exiting Setup, 27
 Exporting, 28
 Printing, 28
 Setup, 27
 Starting, 27
 Stopping, 28

N

Nuclide
 change, 13
Number of Measurements, 23

O

Opening an Archive, 31

P

print
 QC History, 21
Printer On PC Frame, 12
Printing
 Data Acquisition, 15
 Maximum Activity Acquisition, 28
 Repeated Acquisition, 24
Printing Archived Data, 32

Q

QC
 function, 9
QC History
 Exiting, 21
QC History, 20
 Chamber Selection, 20
 Delete, 21
 function, 9
 printing, 21
 save to file, 21
 Test Selection, 21
QC Test, 16
 Exiting, 19
QC Tests
 Daily Chamber Test, 16
 Selecting the Chamber, 17

R

Repeated Acquisition, 9, 22
 Canceling, 24
 Chamber Selection, 22
 Entering Interval, 23
 Exiting, 25
 exiting setup, 23
 Exporting, 24
 Number of Measurements, 23
 Printing, 24
 Setup, 23
 Starting, 24
Report Header, 10, 11

S

Save to File
 QC History, 21
Saving Data, 14
Select Chamber for Test Frame, 17
Select Chamber Frame, 14
Setup, 10
 Exiting, 12
 function, 10
 Maximum Activity Acquisition, 27
 Repeated Acquisition, 23

T

Test Selection
 QC History, 21

U

User Key
 Update, 14

V

Viewing Archived Data, 32

NEW PRODUCT WARRANTY

Conditions and Limitations

CAPINTEC warrants its products to be free from defects in material and workmanship for a period of 24 months after delivery to the original purchaser. During the warranty period, our liability is limited to the repair of the product at our service center at no charge for parts and labor, provided the examination discloses that the affected parts were originally defective and have not been subjected to misuse or abuse. This warranty extends to every part of the product except fuses and batteries. We shall not be liable for any expenses incurred for transportation or installation of our product.

This warranty is expressly in lieu of any other express or implied warranty, and we make no warrant that the products sold herein are merchantable or are suitable for any particular purpose. The benefits of this warranty shall extend only to the purchaser and to none other. We shall have no liability of any nature arising out of the use of or application of the product in conformity with this warranty. If the product shall fail to perform in conformity with the warranty made herein, we shall be liable solely for the repair and replacement of the product as provided hereinabove, and shall have no other liability in respect of such failure or performance or any consequences therefrom including, without limitation, business impairment or loss, personal injury or property or property damage.

No agent, employee, or representative of ours has any authority to bind us to any representation or warranty concerning the product sold herein. No representation or alteration or modification of the foregoing conditions shall be valid unless made in writing and signed by an executive officer of our corporation.

