

MIRION MISSIONS IN THE MILKY WAY

ACE | 1997

Rectangular segmented PIPS detector on the SEPICA instrument. Mission to sample low-energy solar particles and high-energy galactic particles.

BEPICOLOMBO | 2018

Telescope of 5 circular PIPS detectors of different sizes on the BERM probe. Europe's first mission to Mercury.

MESSENGER | 2015

Square pixelated PIPS detector. Mission to understand Mercury, least-explored of the terrestrial planets.

CHANG'E-4 | 2019

Rectangular segmented PIPS detectors. First lander on the far side of the moon.

EQUATOR-S | 1997

Circular PIPS detectors. Mission designed to study Earth's magnetic environment above the equator.

DOUBLE STAR | 2004

Rectangular PIPS detectors. Double satellite mission to study the effects of the Sun on Earth's environment.

MARS CURIOSITY | 2012

Pixel PIPS detector coupled to scintillators on the RAD instrument. Mission to explore and quantitatively assess the surface of Mars.

JUNO | 2016

Rectangular pixel PIPS detector. Mission to reveal the origin and evolution of Jupiter.

NEW HORIZONS | 2015

Rectangular pixel PIPS detector on the PEPSSI instrument. Mission to take precise measurements on Pluto.

SOLAR ORBITER

EPT & HET – circular pixel PIPS detectors on the EPD probe. Segmented PIPS detector (annular segment) on the SWA instrument. Not yet launched. Mission to explore the inner heliosphere and the effects of solar activity on it.

PAMELA | 2016

Square segmented PIPS detector. First satellite-based experiment dedicated to the detection of cosmic rays.

VAN ALLEN PROBES | 2012

Rectangular pixel PIPS detector. Mission to explore the Van Allen Radiation Belts.

MARS ODYSSEY | 2001

On board spacecraft, Gamma-ray Spectrometer (1.2 kg) HPGe detector. Mission to study elemental composition and radiation on Mars

CASSINI | 2017

Several circular, square and rectangular PIPS detectors on the MIMI instrument. Mission to explore the wonders of Saturn and its family of icy moons.

STEREO | 2008

Trapezoidal segmented PIPS detector on plastic instrument. Mission to study the Sun and the nature of its coronal mass ejections (CMEs).

PROBA-V SATELLITE | 2013

Segmented PIPS telescope detector on the EPT instrument. Mission to survey space radiation levels.

MARS EXPRESS | 2003

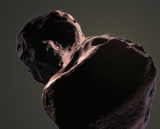
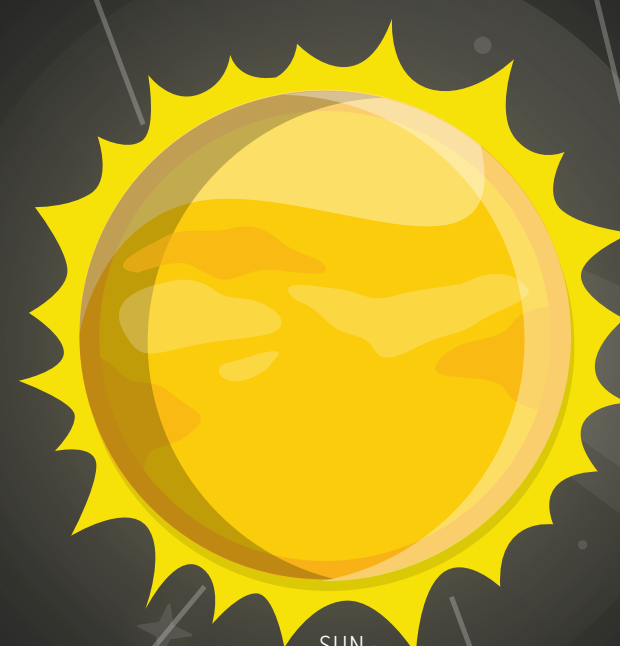
Several circular, square and rectangular PIPS detectors on the Aspera instrument. Mission to characterize, photograph, and map the surface of Mars.

SOHO | 1995

Several circular, square and rectangular PIPS detectors on the ERNE instrument. Space-based observatory for viewing and investigating the Sun from its core, through its atmosphere, out to a distance ten times beyond the Earth's orbit.

MMS SPACECRAFT | 2015

Rectangular pixel PIPS detector. Investigates how the Sun's and Earth's magnetic fields connect and disconnect.



LEARN MORE AT WWW.MIRION.COM



MIRION
TECHNOLOGIES