

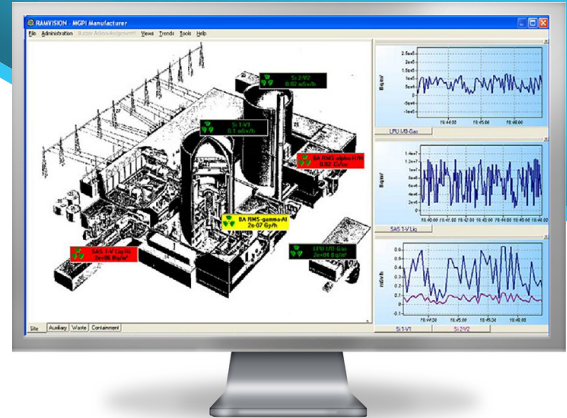


RAMSYS

RAMVISION

Supervisory Control and Data Acquisition Software

User friendly software to acquire, store and provide measurements and status with archiving capabilities.



FEATURES

- User friendly and ergonomic Microsoft Windows® based interface
- Graphical display of measurements (trends, grids of cells, cartography)
- Remote visualization stations
- Alarm management
- Histories and daily archives
- Data export (Excel, database...)
- Modular, evolutive and opened
- Based on TCP/IP and a client/server distributed architecture
- Launch MASS2

DESCRIPTION

The RAMVISION software has been developed to manage acquisition, storage and visualisation of the RAMSYS product line monitor measurements.

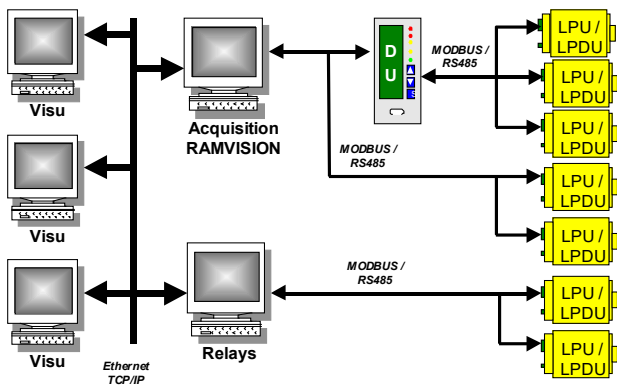
This software allows monitoring of a medium size RAMSYS compatible network. Its modular architecture makes it opened and able to supervise other data sources (weather stations, other monitor types).

STANDARD FUNCTIONS

- Security access management (2 levels)
- Periodical acquisition of monitor measurements and status (redundancy possibility)
- Processing historic of instantaneous or averaged data
- Daily archiving of historic
- Fault and alarm thresholds management:
 - Visual alarms (with dedicated colors)
 - Auditory alarms (buzzer)
- Set alarm threshold
- Data real time visualization:
 - Numerical display – cells in view of grid or cartographic style
 - Graphical display – trends
- Set graphically view parameters (cells positioning by drag and drop)
- Historic and archives visualization in batch mode
- Batch mode exportation of historic and archives with picture (WMF, EMF, BMP) or text (CSV for Excel) formats
- Multilingual management with easy translatable text files as inputs
- Log file management

COMPLEMENTARY FUNCTIONS (OPTIONS)

- Status report on digital output boards (requires specific hardware)
- Measurement report on analog boards (requires specific hardware)
- Real time exportation of measurements in regular text files, continuously or at change, instantaneous or averaged.
- Real time exportation of measurements to a database (SQL Server, Oracle) using a universal Microsoft ODBC connection
- Interface with a weather station (VAISALA WXT510)
- Interface with non RAMSYS monitors on the market
- Calculation of virtual measurements from real ones



Featuring:

