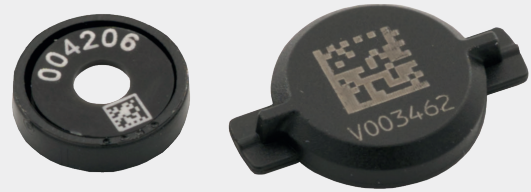


BeOSL Eye Lens Dosimeter

Partial Body Dosimeter



Key Features

- Worn with various adapters or radiation protection goggles
- Small Size for easy handling
- Compatible with BeOSL ezClip

Partial body dose measurements including the eyes are critical and important compliances to meet. When measuring goes beyond whole body doses, the pairing of the BeOSL ezClip and the BeOSL Eye Lens Dosimeter keeps the user secure while assuring standards. The dosimeter's small size lends to its versatility and provide the user with comfort and ease when taking on routine tasks.

The BeOSL Eye Lens Dosimeter is the best solution for eye dose monitoring and can be smoothly integrated into both new and existing BeOSL Systems.

Like other BeOSL Partial Body Dosimeters, the BeOSL Eye Lens Dosimeter functions with the BeOSL ezClip. This tiny detector comes fully calibrated and fits perfectly into the Eye Lens Dosimeter for accurate and secure measuring. The ezClip is available with or without an ID number. There are both manual and automatic devices available for inserting and removing the ezClip from the BeOSL Eye Lens Dosimeter.

When the ezClip is fit into the BeOSL Eye Lens Dosimeter, there are three different options for wearing the dosimeters:

Headband Adapter

Firstly, there is the Headband Adapter (Article No. 4014) option which securely holds the BeOSL Eye Lens Dosimeter with our Headband (Article No. 4019). The Eye Lens Dosimeter Mounting Tool (Article No. 4020) provides assistance in fitting the dosimeter into the adapter. The Headband Adapter is available in various colors to help with group allocation and routine schedules.

Adapter Clip

The Adapter Clip works seamlessly with the BeOSL Eye Lens Dosimeter. The Adapter Clip securely holds the dosimeter with the use of the Mounting Tool (Article No. 4020). The user places the dosimeter (fitted with an ezClip, Article No. 1003) inside the Adapter Clip and uses the Mounting Tool to securely close it inside of the clip. The Adapter Clip is an excellent option for clamping to an array of radiation protection accessories including a visor, surgical cap, headband, etc.

Radiation Goggles

The third option for wearing the BeOSL Eye Lens Dosimeter is with radiation goggles. The goggles work best with our Adhesive Adapter (Article No. 4021); this allows the user to place and glue the BeOSL Eye Lens Dosimeter safely into the radiation goggles. It is also designed to be paired with Mavig* radiation goggles.

When the measuring is completed, the BeOSL Eye Lens Dosimeter can be removed for further processing. The ezClip has its own reusable case that like looks very similar to the BeOSL Two-Element Dosimeter; this is called the ezCase. When fit into the ezCase, the ezClip is read, erased and processed in existing BeOSL Reader and Eraser. It can even be used with our automatic options including Cartridge Based Automation and the Robotic Table.

Our BeOSL software options, LabClient and WorkFlow, provide accuracy and assure compliance.

For technical data, catalog pages and pricing, please contact the Sales team at sales@dosimetrics.de.

Technical Specifications

Dosimeter Identification:

QR code and human readable number

Detector Material:

Beryllium Oxide

Radiation Type:

Photon Radiation and Beta Radiation from Sr/Y-90

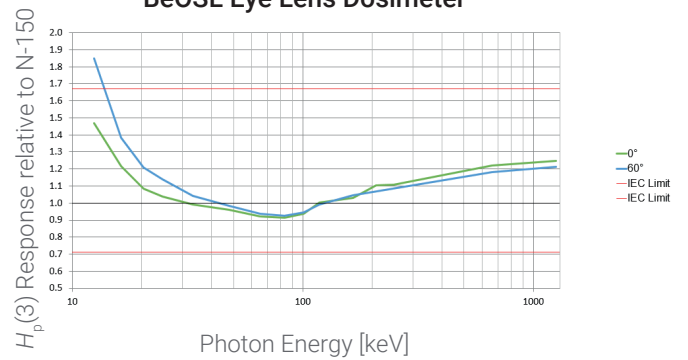
Nominal Range:

30 μ Sv - 10 Sv

≥ 16 keV

$0^\circ \leq \alpha \leq \pm 60^\circ$

BeOSL Eye Lens Dosimeter



Components

Article No.	Description
1003	ezClip
2007	Manual Assembly and Disassembly Device
2008	Pneumatic Assxembly and Disassembly Device
2009	Detector Mapping Station (Semi Automatic)
2013	Detector Mapping Station (Manual)
4004	ezCase
4014	Headband Adapter for Eye Lens Dosimeter
4018	BeOSL Eye Lens Dosimeter
4019	Headband
4020	Eye Lens Dosimeter Mounting Tool
4021	Adhesive Adapter for Eye Lens Dosimeter
4046	Adapter Clip for BeOSL Eye Lens Dosimeter
4043, 4045 & 4048	Labels for Finger Ring and Eye Lens Dosimeter (No ID)

