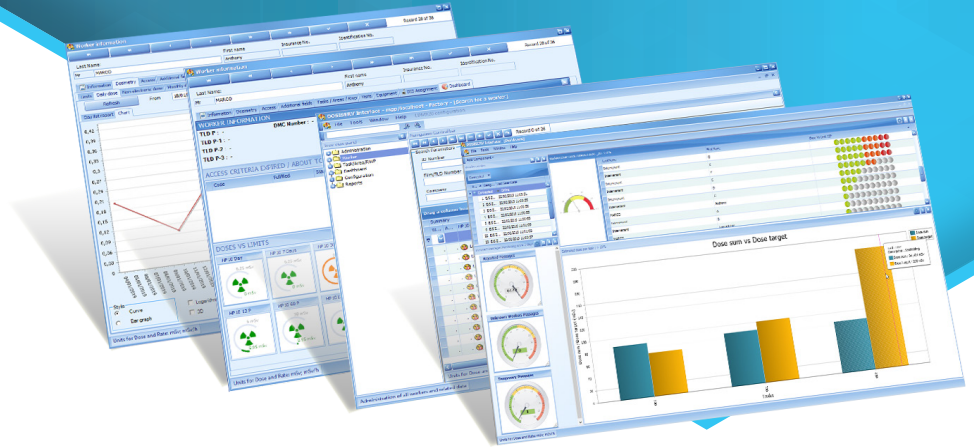




# DosiServ™

Health Physics  
Dose Management Software



## FEATURES

- Real-time access control capabilities:
  - Medical/training due dates checking when issuing an electronic dosimeter
  - Control of the worker's accumulated doses versus configurable dose limits
  - Check of any other worker qualification the Radiation Protection procedure should require
- Electronic dosimeter configuration and reading in real time
- Storage of worker's official dose data (built-in reports are available)
- A true ALARA approach through collective dosimetry features
- Connection to body monitors to record contamination events at exit time
- Compatible with the major IT platforms of the market

## DESCRIPTION

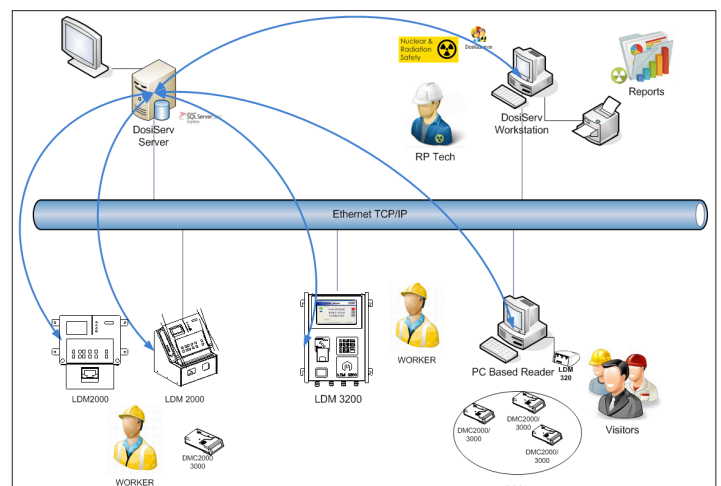
The DosiServ dosimetry system is an integrated state-of-the-art dose management system.

It is intended to:

- handle electronic dose data for workers (individual), Jobs (RWP Radiological Work Permit) in various controlled areas.
- Offer access control capabilities through dosimeters readers.

## RELATED PRODUCTS

- LDM 2000: industrial dosimeter reader
- LDM 3200: PC based dosimeter reader
- LDM 320: reader heads
- DBR: reader for DIS dosimeters
- LDM 3000/LDM Access: dosimeters self issue software
- DosiFFR: First Fast Responder software
- DosiCal: IRD 2000 Calibrator Management Software
- DMC 2000, DMC 3000: dosimeters and modules



## FUNCTIONAL CHARACTERISTICS

### Network based system

Readers and client stations connect to the dosimetry server via TCP/IP (Web access capability for client stations)

### Offline mode

If the network becomes unavailable readers will locally store data and automatically upload it once the connection is back

### Real-time access control

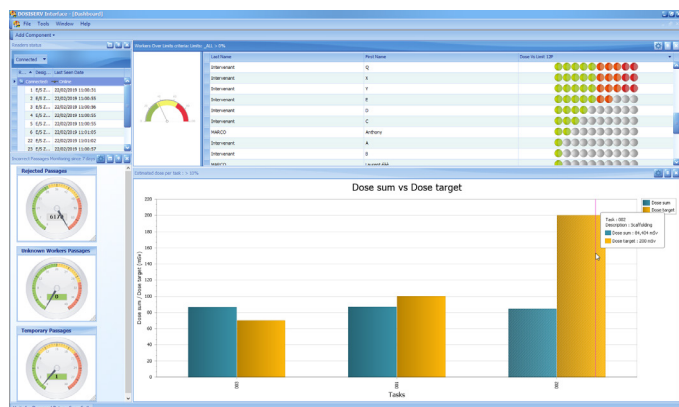
When issuing the dosimeter the system will check:

- Worker identification
- RWP, task authorization
- Area authorization
- Worker qualifications (medical, training, etc.)
- Optionally official dosimeter (barcode) can be verified

Once access granted the system will program the appropriate dosimeter alarm set points.

### Data storage

At exit time the system records transaction's details and worker records are updated



### Supervision

- The system is delivered with various dose reports (training is available for customer to create custom report)
- Dashboard application offering a powerful and customizable overview on the dosimetry system in real time

### Interfacing

- The system is delivered with Web services in order to facilitate exchange with external systems (i.e human

resources/security system)

- Connection with system dedicated to First Fast Responders (DosiFFR Software)
- Collection of dose information from DIS dosimeters (DBR reader needed)

### Multilingual

- PC based reader provides up to 6 configurable languages
- Client station is delivered in French, English and Chinese, other languages can be added anytime

### Security

- Access to the system is password protected (MS Windows active directory support)
- Any important data modification is stored into a LogBook
- Data access can be filtered per user profile
- Encrypted Client/Server communication

### Extended Reader Features (LDM 3000 / LDM Access)

- Ability to configure history data collection and store it in the DosiServ database
- Ability to configure Smart Offline Mode (Standalone Extended Access Control)
- Ability to configure the list of task / RWP codes in entry area

### Management of the dosimeter fleet

- Import dosimeter data and calibration dates with DosiCal software
- Import dosimeters batches and their calibration date via an LDM 320 reader
- Ability to activate dosimeter control and their calibration dates in entry area

## HARDWARE SETUP

### • Client workstation (minimum requirements)

- Operating system Windows Seven (XP accepted)
- Memory 1 GB
- Drive 256 GB

### • Server (minimum requirements)

- Operating system Windows Server 2003
- Memory 4 GB
- Drive 1 TB

### • Platforms

- Windows 7, 8 & 10 (32 & 64 bits)
- Windows server 2008 R2, 2012 & 2016
- Citrix : XenApp 6.5 & 7,5

### • Supported databases

- Oracle 10, 11g, 12c, 18, 19c
- SQL Server -SQL express 2008 to 2019