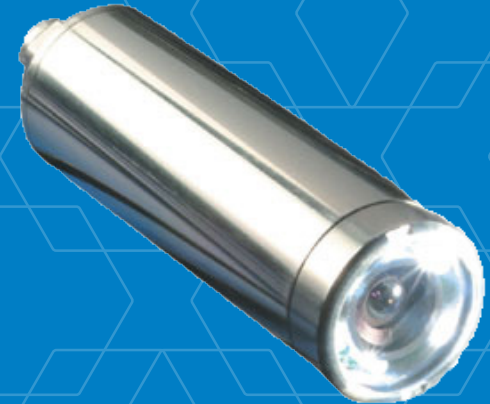




RADIATION TOLERANT CAMERA

C911™ Dotcam

Rugged, Low Cost Inspection Camera



The DotCam is a versatile, affordable inspection camera with low-light capabilities and extensive lens options to easily adapt for specific tasks.

When budget constraints and size are of the utmost concern, the Dotcam provides an inspection tool at an affordable cost. Rugged and reliable, the Dotcam can be used in a wide range of applications. The system incorporates a state-of-the-art, fully automatic sensor that provides high-quality color pictures and can even supply monochrome images in low-lighting conditions.

The Dotcam is available in stainless steel with glanded cable or quick release connector depending on your project needs. All versions provide lighting with an integral white LED lighting ring and operate under water to a depth of 60 m (200 ft).

With its ease of use, capability in low-light applications and extensive lens options, the Dotcam is an ideal "building block" for a wide range of inspection systems and can be easily adapted for specific tasks.

FEATURES

- ✓ Low cost
- ✓ Rapid deployment
- ✓ High resolution color
- ✓ White LED lighting with variable intensity option
- ✓ Enhanced shock/vibration resistance for tooling applications
- ✓ Stainless steel housing
- ✓ Small in size
- ✓ Fully submersible camera/cable
- ✓ Low light capable
- ✓ Numerous lens options providing different fields of view

APPLICATIONS

- ✓ General inspection
- ✓ Remote welding
- ✓ Robotic equipment
- ✓ End effectors
- ✓ Constricted area viewing
- ✓ Tool head viewing device

C911 DOTCAM

SPECIFICATIONS AND PERFORMANCE

- Image Sensor: 1/3.2 in. CMOS sensor
- Temperature Rating (camera module): 0 to 50 °C (32 to 122 °F)
- Resolution: ≥800 TV lines
- Total Dose: 100 Gy (10⁴ rad)
- Angle of View (H) (approx. with standard lens): 80° horizontal, 65° vertical, 93° diagonal
- Construction: Stainless steel (SS)
- Weight: 192 g (6.8 oz)
- Min illumination: 0.05 lx (faceplate)
- Signal to noise ratio: > 45 dB
- Standard lens: 3.6 mm f/2.0
- Power source: DC 12 V ± 10% (optional wall transformer included with glanded cameras and cable options)
- Current consumption: 120 mA
- Diameter: 29 mm (1.14 in)
- Length (with connector): 110 mm (4.3 in)
- Length (with mated connector): 147 mm (5.8 in)
- Length (with gland): 110 mm (4.3 in)
- Lighting: Six LEDs

*Other angles may be achieved with alternate optional lenses.

For higher radiation applications, please see our information on the Dotcam HR.



CABLES

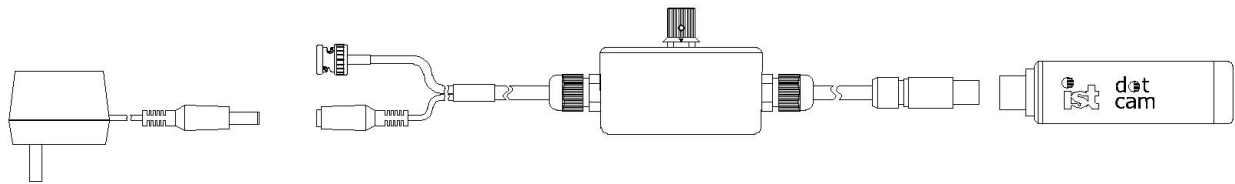
Four core radiation tolerant PE inner insulation and polyurethane sheath

- Diameter: 6.2 mm (0.25 in)
- Length: 30 m (98.4 ft) (standard)

PART NUMBERS**

- C911CMN53A/S PAL: Dotcam, 3.6 mm lens, stainless steel, 3 pin connector (no cable)
- C911CMN54A/S30M PAL: Dotcam, 3.6 mm lens, stainless steel, glanded with 30 m cable
- C911CMN55A/S30M PAL: Dotcam, 3.6 mm lens, stainless steel, variable lighting, glanded with 30 m cable
- C911CMP53A/S NTSC: Dotcam, 3.6 mm lens, stainless steel, 3 pin connector (no cable)
- C911CMP54A/S100 NTSC: Dotcam, 3.6 mm lens, stainless steel, glanded with 100 ft cable
- C911CMP57A/S100 NTSC: Dotcam, 3.6 mm lens, stainless steel, variable lighting, glanded with 100 ft cable
- C911CAB05A/100: Cable with 3pin connector, 100 ft length

** Other lens and cable options are available; please contact Mirion Technologies for details.



Copyright ©2024 Mirion Technologies, Inc. or its affiliates. All rights reserved. Mirion, the Mirion logo, and other trade names of Mirion products listed herein are registered trademarks or trademarks of Mirion Technologies, Inc. or its affiliates in the United States and other countries. Third party trademarks mentioned are the property of their respective owners.

Specifications may vary according to system configuration. We reserve the right to modify or amend the information herein without prior warning. Please contact your Mirion representative for further information.

Mirion Technologies (IST) Ltd and Mirion Technologies (Imaging), LLC are ISO 9001:2015 certified companies (certificates available on request or at www.mirion.com).

Please note that the products and accessories described in this data sheet may be subject to UK export control or US re-export control. Please check with your authorized representative when enquiring about this product.