

Surgical C-Arm Table 840

The ideal choice for vascular and endoscopic procedures



Features

- Free-Float Tabletop – With specially-designed SmoothGlide™ movement
- Carbon-Fiber Tabletop – 0.7 mm attenuation (1.2 mm with pad)
- Choice of contoured or rectangular design; contoured tabletop features a face cutout for comfortable prone positioning
- Tabletop Motion – Expansive head-to-toe, 35"
- Radiolucent Area – Extra-large, 75"
- Isocentric Lateral Roll Motion – Maintains image center during tabletop movement, minimizing image distortion (+/- 15°)
- Precision Electric Motor Actuators – No oil or hydraulics
- High-Speed Actuators – Ensure quick tabletop positioning, height adjustability, isocentric lateral roll and Trendelenburg motions
- Mushroom-Shaped Control – Ergonomic, for free-float motion
- Table Base – Encased in stainless steel, easy to clean
- Hand and Foot-Operated Controllers – Ensure quick and safe tabletop positioning
- Patient Capacity – 500 lb
- Low Profile Base – For unrestricted C-Arm movement
- Accessory Rails
- AC and Battery Power – Standard



The ergonomic mushroom-shaped control grip optimizes command of the SmoothGlide free-float tabletop.

Description

With an advanced low attenuation float top for cardiovascular, endoscopic and pain management procedures, the Surgical C-Arm Table 840 is the ideal choice when stability, access, and precise, quiet, vibration-free positioning are essential. A cantilevered low attenuation carbon-fiber tabletop, with choice of rectangular or contoured design, accommodates portable or ceiling-suspended C-Arms.

The extra-large 75" radiolucent area, free-float X-Y tabletop, motorized control of height, isocentric lateral roll, Trendelenburg motions and the catheter tray extension make the Surgical C-Arm Table 840 ideal for cardiovascular and interventional radiology applications. Functional design provides complete access with reduced radiation exposure to clinicians. Patient comfort and stability are ensured by two-inch thick table padding and three adjustable straps with hook and loop fastening.

Control Made Easy

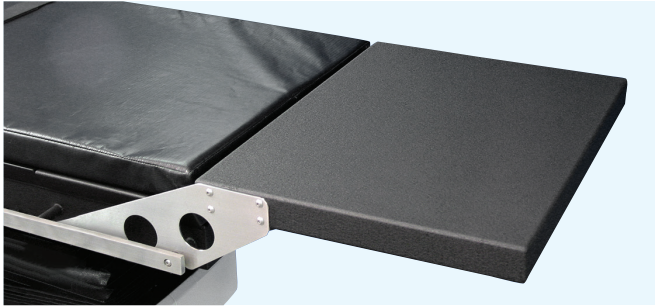
The portable handheld and foot-operated controllers ensure quick and safe tabletop positioning, and can be positioned from any point around the table. Both controllers offer the freedom to adjust height, lateral roll and Trendelenburg motions. The handheld controller provides the back-to-level function. The foot-operated controller also releases the tabletop for X-Y positioning and is ideal when hands are busy with other functions.

Freedom of Movement

The ergonomic mushroom-shaped control optimizes command of the SmoothGlide™ free-float tabletop. When employing any degree of tilt or roll, X and Y positions are locked to prevent gravity-induced movement. 35" head-to-toe (X) can be maintained during lateral roll; and side-to-side (Y) can be maintained during Trendelenburg positioning.

Isocentric lateral roll motion is a unique movement that maintains center of the focal area, minimizing image distortion. Reducing the time required for adjustments, table or patient ultimately reduces exposure to scatter radiation.

Biodex | Surgical C-Arm Table 840



Catheter Tray Extension - This removable extension provides additional table length to accommodate catheters within the patient's sterile field. This feature makes the procedure easier, safer and reduces the risk of breaking the sterility of the catheters. (Extension is not radiolucent and not suitable for patient support.)

Specifications

- **Dimensions:**
 - Overall:** 97" l x 26" w (246 x 66 cm) with OR accessory rails
 - Tabletop:** 97" l x 24" w (246 x 61 cm) – choice of classic contoured or rectangular design
- **Radiolucent Area:** 75" l x 24" w (191 x 61 cm)
- **Motions:**
 - Height Adjustable:** 33.5" to 43.5" (84 to 109 cm)
 - Tabletop X Motion (head-to-toe float):** 35" (88.9 cm)
 - Tabletop Y Motion (side-to-side float):** 10" (25.4 cm)
 - Trendelenburg:** 0° to 20°
 - Reverse Trendelenburg:** 0° to 20°
 - Isocentric Lateral Roll:** 0° to ±15°
- **Controls:**
 - Hand Control:** Activates height, isocentric lateral roll and Trendelenburg motions
 - Foot Control:** Activates all motions (has release for float)
 - Mushroom-Top Control:** Releases X-Y Tabletop motions
- **Accessory Rails:** Standard OR accessory rails 49.5" x 1.12" x .375" (124 x 2.86 x .95 cm) mounted near foot end of table
- **Patient Restraints:** Three body straps
- **Catheter Tray Extension (removable):** 18" l x 24" w (45.7 x 61 cm) non-radiolucent
- **Tabletop Material:** Carbon fiber with integral head section
- **Mattress:** Seamless, 2" thick (5 cm)
- **Attenuation:** 1.2 mm Aluminum equivalence
- **Finish:** Stainless Steel
- **Patient Capacity:** 500 lb (227 kg)
- **Weight:** 641 lb (291 kg)
- **Shipping Weight:** 865 lb (392 kg)



Isocentric Lateral Roll minimizes patient and C-Arm repositioning.

- **Power:** 115 VAC or 230 VAC and battery. Battery automatically charges when table is plugged in. An optional battery with separate charging unit provides continuous, cordless operation.
- **Warranty:** Three years parts and labor
- **Certifications:** ANSI/AAMI ES60601-1:2005 +C1 (2009) +A1 (2012) +A2 (2010); CAN/CSA C22.2 No: 60601-1:14; CAN/CSA-C22.2 NO.60601-2-46:12; IEC 60601-1-2-46:2016.

Ordering Information

058-840	Table, Surgical C-Arm, Contour, 115 VAC
058-840-10	Table, Surgical C-Arm, Rectangle, 115 VAC
058-845	Table, Surgical C-Arm, Contour, 230 VAC
058-845-10	Table, Surgical C-Arm, Rectangle, 230 VAC

Optional:

056-866	Arm Board, Carbon Fiber, two arms
056-865	Arm Board, Carbon Fiber, one arm
058-964 US	Arm Board with Rail Clamps (pair)
058-968 EU	Arm Board with Rail Clamps (pair)
056-850	IV Pole, Rail Mounted
058-849	Clamp, Accessory, C-Arm Table
058-856	Radiation Shield, Head/Cervical
	Fits Surgical C-Arm Tables 840, 846 and 870
058-857	Radiation Shield, Thoracic/AB
	Fits Biodex™ Surgical C-Arm Tables
056-862	Battery and Charging Unit, 115 VAC
056-863	Battery and Charging Unit, 230 VAC
056-802	Bellows Skirt, disposable plastic, 250/roll
046-275	Dispenser, Disposable Protective Roll
	For 056-802 Bellows Skirt. Wall mounted.
042-580	Barrier, Clear-Lead, Standard Window
	Window size 30" w x 22" h (76 x 56 cm)
042-582	Barrier, Clear-Lead, Full Window
	Window size 30" w x 46" h (76 x 116.8 cm)
042-583	Barrier, Mobile, Clear-Lead, Hourglass Window
	For ionizing radiation, 0.5 mm LE Window size 24" w x 48" h (61 x 122 cm)



mirion.com/biodex