

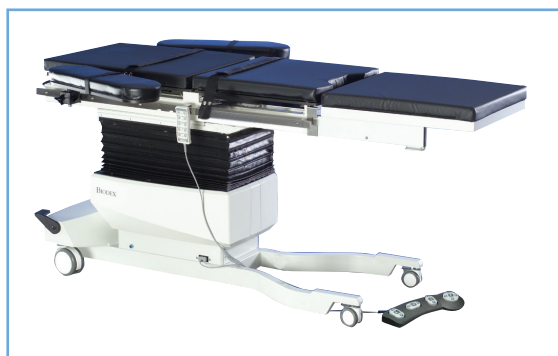
Urology C-Arm Table 800

Designed for image-guided urologic procedures



Features

- Widely positioned base legs for optimal surgeon access to patient
- Foot controller and motorized tabletop enable hands-free adjustment during procedures
- Five-axis motorized tabletop positioning – X-Y, up/down, Trendelenburg and lateral roll
- Fowler Positioning – Industry exclusive, 0° to 80°
- 500 lb patient capacity
- Radiolucent extension adds versatility for general surgery, pain and orthopedic use
- Precision Electric Motor Actuators – No oil or hydraulics
- Low Profile Base – For unrestricted C-Arm movement
- Accessory Rails
- AC and Battery Power – Standard



Radiolucent extension converts the Urology Table into a general purpose Surgical Table.

Description

The Urology C-Arm Table 800 is an ideal choice for urologic abdominal cavity image-guided procedures. The tabletop is cantilevered to accommodate portable or ceiling-suspended C-Arms and the wider front leg stance offers optimal patient access.

The tabletop easily accommodates bariatric patients while the radiolucent area allows for full fluoroscopic visualization. This functional design offers unobstructed C-Arm positioning while minimizing radiation exposure to clinicians.

Power Motions

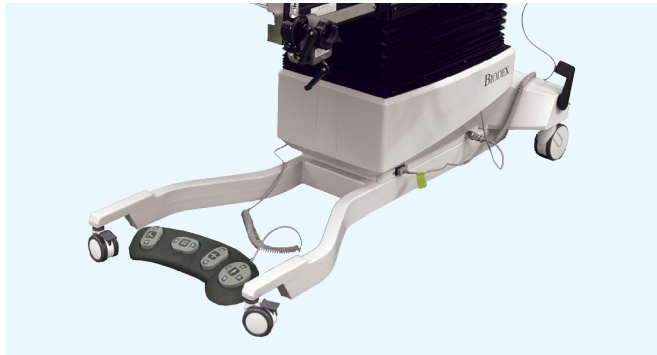
The Urology C-Arm Table features motorized actuation of height, X-Y, lateral roll and Trendelenburg motions of the tabletop. The handheld and foot-operated controllers can be positioned for access from any point around the table ensuring quick and safe tabletop positioning during any phase of a procedure. The “Level” feature returns the table to 0° tilt and 0° lateral roll, bringing the table quickly to a level position. Both controllers can be used for motorized X-Y positioning of the tabletop and feature proportional speed control.

More Adjustments and Features

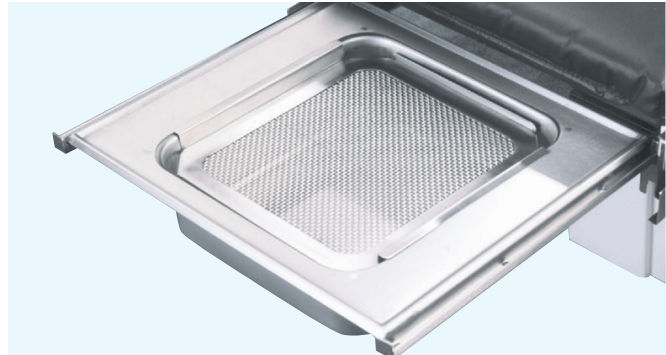
The table back adjusts with a simple touch-handle lock/unlock mechanism to an 80° angle with incremental stops at 20°, 30°, 40°, 50°, 60°, 70° and 80°.

The table comes equipped with a lightweight, non-imaging patient transfer extension and a radiolucent extension. The radiolucent extension provides capability for vascular, cardiac and other general C-Arm applications. Select from knee crutches or stirrups, standard arm board or with rail clamps – configure to your exact specifications.

Biodex | Urology C-Arm Table 800



Wide-leg stance, compact foot controller and motorized tabletop allow for optimal access.



Choose from a stainless steel drain pan with a wire mesh splash screen or a plastic drain-bag holder for disposable drain bag.

Specifications

• Dimensions:

Overall: 84.5" l x 25.5" w (214.6 x 64.8 cm) with OR accessory rails

Tabletop: 53" l x 21" w (134.6 x 53.3 cm); 84" l (213.4 cm) with extension

Lightweight Extension (for patient transfer only, not for imaging): 26.5" l x 21" w (67.3 x 53.3 cm)

Radiolucent Extension: 31" l x 25.5" w (78.7 x 64.8 cm) with OR accessory rails

Radiolucent Area: 54" l x 17.5" w (137.2 x 44.5 cm)

• **Tabletop Material:** Three Fibersin™ sections – each with individual 2" mattress

• **Mattress:** Individual, seamless, 2" thick (5 cm), one for each section

• Motions:

Tabletop Y Motion (side-to-side): 10" (25.4 cm)

Tabletop X Motion (head-to-toe): 20" (51 cm)

Trendelenburg: 0° to 20°

Reverse Trendelenburg: 0° to 20°

Lateral Roll: 0° to 20°

Height Adjustable: 34" to 43.5" (86.4 to 110.5 cm)

Footer Positioning: Adjusts from 0° to 80° with touch handle lock/unlock

• Optional:

X-Ray Film Tray: Removable film cassette tray for 14" x 17" film with cassette mask for 10" x 12" film. Film cassette tray can be removed from either side of the table.

X-Ray Grid: Removable X-Ray grid, 103 line, 8:1 ratio

• **Patient Restraints:** Two body straps, two ankle straps

• **Finish:** Powder coat

• Patient Capacity:

- In urologic position: 500 lb (227 kg)

- In use with radiolucent extension: 400 lb (181.4 kg)

- Weight tested to four times the patient load rating

• **Shipping Weight:** 903 lb (409.6 kg)

• Controls:

Hand Control and Foot Control: Activates all motions

Accessory Rails: Standard OR accessory rails, 1.125" x .375" (2.86 x .95 cm)

• **Power:** 115 VAC or 230 VAC and battery. Battery automatically charges when table is plugged in. An additional battery can be charged with optional wall-mounted charger.

• **Warranty:** Three years parts and labor

• **Certifications:** ANSI/AAMI ES60601-1:2005 +C1 (2009) +A1 (2012) +A2 (2010); CAN/CSA C22.2 No: 60601-1:14; CAN/CSA-C22.2 NO.60601-2-46:12; IEC 60601-1-2-46:2016.

Ordering Information

058-800 Table, Urology C-Arm - 800, 115 VAC

058-805 Table, Urology C-Arm - 800, 230 VAC

Optional:

058-962 US Stirrups, 350, with Sec-LOK Strap Rail Clamp (pair)

058-966 EU Stirrups, 350, with Sec-LOK Strap Rail Clamp (pair)

058-963 US Knee Crutches, Goepel with round Rail Clamps (pair)

058-967 EU Knee Crutches, Goepel with round Rail Clamps (pair)

058-972 Cart, Stirrup, Locking Caster

056-851 Drain Bag Frame

058-860 Drain Pan, Stainless Steel

058-964 US Arm Board with Rail Clamps (pair)

058-968 EU Arm Board with Rail Clamps (pair)

058-865 Arm Board, Standard (pair)

056-463 Grid, X-ray

058-866 Cassette Tray, 11" x 14"

056-850 IV Pole, rail mounted

056-862 Battery and Wall Charging Unit, 115 VAC

056-863 Battery and Wall Charging Unit, 230 VAC

056-802 Bellows Skirt, disposable plastic, 250/roll

046-275 Dispenser, Disposable Protective Roll

For 056-802 Bellows Skirt. Wall mounted.

Replacement:

056-460 Hose, Drain, Urology, 40/cs

056-857 Bags, Drain, 10/pkg



mirion.com/biodex

