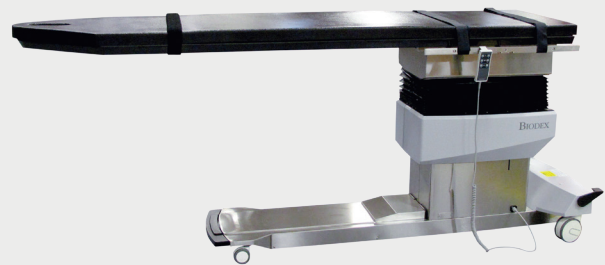


Pain Management C-Arm Table 870

Professional class equipment for pain care applications



Features

- Carbon-Fiber Tabletop – 0.7 mm attenuation (1.2 mm with pad)
- Isocentric Lateral Roll Motion – Maintains image center during tabletop movement, minimizing image distortion (+/- 15°)
- Radiolucent Area – Large, 70"
- Trendelenberg Motion – 0° to 20°
- High-Speed Actuators – Ensure quick tabletop positioning, height adjustability, isocentric lateral roll and Trendelenburg motions
- Enhanced Patient Comfort – Table padding is 2" thick; includes 3 adjustable straps
- Precision Electric Motor Actuators – No oil or hydraulics
- Table Base – Encased in stainless steel, easy to clean
- Hand and Optional Foot-Operated Controllers – For convenient positioning
- Patient Capacity – 500 lb
- Low Profile Base – For unrestricted C-Arm movement
- Accessory Rails
- Choice of contoured or rectangular design. Contoured tabletop features a face cutout for comfortable prone positioning.



Minimize patient and C-Arm repositioning with isocentric lateral roll motion. The only pain table with isocentric lateral roll.

Description

The Pain Management C-Arm Table 870 is designed for image-guided fluoroscopic procedures where stability, access, and precise, quiet, vibration-free positioning are essential. A cantilevered low attenuation carbon-fiber tabletop, with choice of contoured or rectangular design, accommodates portable or ceiling-suspended C-Arms. The standard contoured top with face cutout provides ample workspace for anesthesiologists, yet the narrowness required for cervical procedures. The rectangular top offers additional space to promote superior image quality for long-leg runoff studies.

The 24"-wide tabletop easily accommodates bariatric patients while our 70"-long radiolucent area allows for full fluoroscopic visualization over its 97"-long top.

Automatic Positioning

A portable handheld or optional foot-operated controller can be positioned for convenient access from any point around the table. Both controllers offer the freedom to adjust height, isocentric lateral roll, return-to-level and Trendelenburg motions, allowing for unobstructed C-Arm positioning and reduced radiation exposure to clinicians. The foot-operated controller can be used when hands are busy with other functions.

Biodex | Pain Management C-Arm Table 870



Optional Foot Controller is ideal for use when hands are busy with other functions.

Specifications

- **Dimensions:**

Overall: 97" l x 26" w (246 x 66 cm) with OR accessory rails

Tabletop: 97" l x 24" w (246 x 61 cm) – choice of classic contoured or rectangular design

Radiolucent Area: 75" l x 24" w (191 x 61 cm)

- **Motions:**

Height Adjustable: 29.5" to 39.5" (75 to 100 cm)

Trendelenburg: 0° to 20°

Reverse Trendelenburg: 0° to 20°

Isocentric Lateral Roll: 0° to ±15°

- **Controls:**

Hand Control: Activates height, isocentric lateral roll and Trendelenburg motions

Foot Control: Activates all motions

- **Accessory Rails:** Standard OR accessory rails 30" x 1.12" x .375" (75 x 2.86 x .95 cm) mounted near foot end of table

- **Patient Restraints:** Three body straps

- **Catheter Tray Extension (optional):** 18" l x 24" w (45.7 x 61 cm) non-radiolucent

- **Tabletop Material:** Carbon fiber with integral head section

- **Mattress:** Seamless, 2" thick (5 cm)

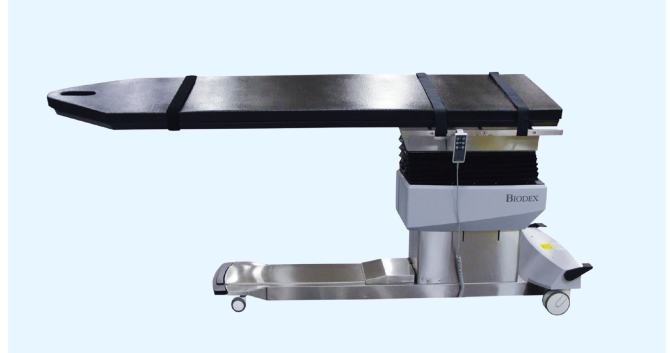
- **Attenuation:** 1.2 mm Aluminum equivalence

- **Finish:** Stainless Steel

- **Patient Capacity:** 500 lb (227 kg)

- **Shipping Weight:** 749 lb (340 kg)

- **Power:** 115 VAC or 230 VAC



Contour design provides optimum image quality and added workspace.

- **Warranty:** Three years parts and labor

- **Certifications:** ANSI/AAMI ES60601-1:2005 +C1 (2009) +A1 (2012) +A2 (2010); CAN/CSA C22.2 No: 60601-1:14; CAN/CSA-C22.2 NO.60601-2-46:12; IEC 60601-1-2-46:2016.

Ordering Information

058-870 Table, Surgical C-Arm, Contour, 115 VAC
058-870-10 Table, Surgical C-Arm, Rectangle, 115 VAC
058-875 Table, Surgical C-Arm, Contour, 230 VAC
058-875-10 Table, Surgical C-Arm, Rectangle, 230 VAC

Optional:

058-851 Catheter Tray Extension (removable)
058-877 Controller, Foot
056-866 Arm Board, Carbon Fiber, two arms
056-865 Arm Board, Carbon Fiber, one arm
056-850 IV Pole, Rail Mounted
058-849 Clamp, Accessory, C-Arm Table
058-856 Radiation Shield, Head/Cervical
Fits Surgical C-Arm Tables 840, 846 and 870
058-857 Radiation Shield, Thoracic/AB
Fits Biodex™ Surgical C-Arm Tables
056-802 Bellows Skirt, disposable plastic, 250/roll
046-275 Dispenser, Disposable Protective Roll
For 056-802 Bellows Skirt. Wall mounted.
042-580 Barrier, Clear-Lead, Standard Window
Window size 30" w x 22" h (76 x 56 cm)
042-582 Barrier, Clear-Lead, Full Window
Window size 30" w x 46" h (76 x 116.8 cm)
042-583 Barrier, Mobile, Clear-Lead, Hourglass Window
For ionizing radiation, 0.5 mm LE
Window size 24" w x 48" h (61 x 122 cm)



mirion.com/biodex