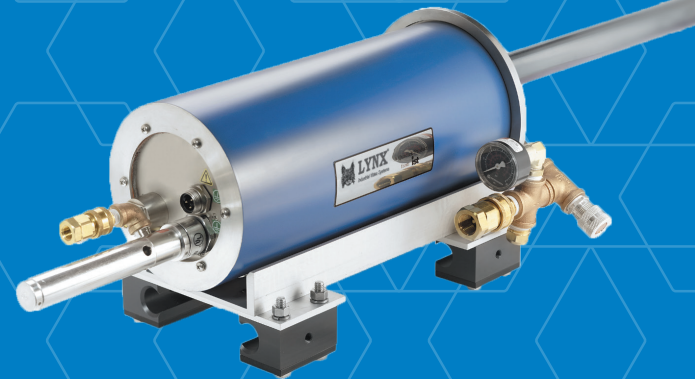




HIGH TEMPERATURE CAMERAS

M540™

Lynx® High Temperature Black and White IR Camera Series



A customizable, highly flexible black and white high-temp camera system.

The IST-Quadtek® M540 Series of near IR Black and White High-Temperature Cameras is designed to provide, the flexibility to customize electronics, lenses, filters and other options to provide continuous monitoring of your process.

Able to penetrate gaseous and fine particulate interferences, these cameras give a considerably improved image of furnace, boiler, ash hoppers, or other processes. Straight, oblique, or right angle lens tube options are available to offer more flexibility in mounting the camera.

FEATURES

- ✓ Coal Fired Utility Boilers:
Provides excellent image quality and depth of field of the superheater tubes in the upper boiler.
- ✓ Ash Hopper:
Allows the ash system operator to effectively monitor the behavior and trends of the build-up and the flow within the ash hopper.
- ✓ Bubbling Fluidized Bed Boilers:
Unique OAL lens gives plan view of bed with simple through-wall camera installation. Helps operator to recognize build-up of cake in the sand bed.

M540 LYNX HIGH TEMPERATURE BLACK AND WHITE IR CAMERA SERIES

SPECIFICATIONS AND PERFORMANCE

CAMERA

- Power Requirements: 110 - 230 V ac, 50 - 60 Hz
- Camera Sensor: 1/2 in. solid-state image sensor
- Sensor Resolution: >500 lines
- Video: 1.0 V P-P, 75 ohm, CCTV signal
/VTE: EIA RS170 525 lines or /VTC: CCIR 625 lines
- Control: /AIR: Remote iris adjustment (with M721™ Remote Auto Iris Controller)

LENS

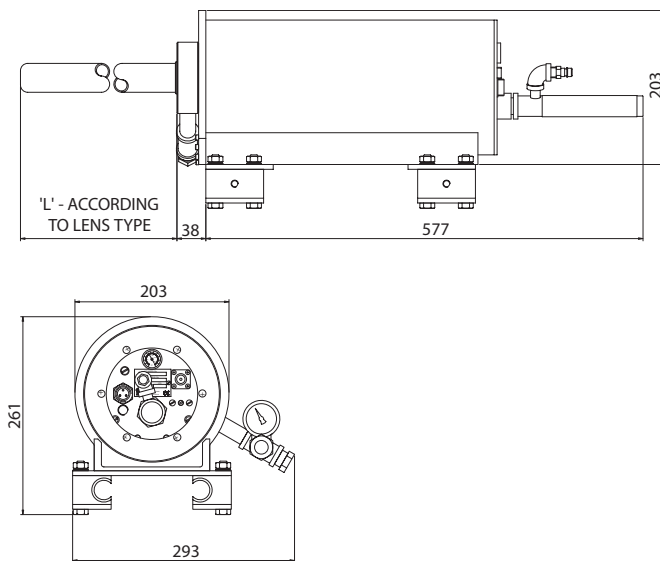
- Construction: Air or water cooled 304 stainless steel outer shroud. Sapphire window for maximum environmental protection.
- Lens Options: /L: Straight view, /RAL: right angle with 90° offset optics, /OAL: oblique angle with 45° offset optics, /WCL: water cooled
- Lengths: STD /L30: L=704 mm (27.7 in.) or /OAL30: L=678 mm (26.7 in) Other lenses available. Please contact your sales representative.
- Field of View:
Wide: 75°H x 56°V
Medium: 55°H x 42°V
Narrow: 35°H x 26°V
- Diameter:
/L: 38 mm (1.5 in.)
/RAL & /OAL: 51 mm (2.0 in.)
/WCL: 57 mm (2.25 in.)
- Cooling Requirements: Instrument quality air, 12-19 dm³/sec (25-40 SCFM) @ 34 - 103 kPa (5-15 psig required for straight view lens (to ISO 8573-1, Class 1•7•2)
- Environment: 1621 °C (2950 °F) with proper cooling
- Thermocouple:
/TJ: Type J thermocouple option
/TK: Type K thermocouple option

ENCLOSURE

- Construction: /CEI: Corrosion-resistant, insulated, air-cooled, NEMA 4; /CEW: Corrosion-resistant, water-cooled, NEMA 4
- Cooling Type: /CCV: Vortex cooling 13 dm³/sec @ 690 kPa (25 SCFM @ 100 PSI); Instrument quality air required.
- Ambient Environment: Max. 60 °C (140 °F) with negligible radiant heat load. Water cooled option available to handle high radiant heat environment

MECHANICAL

- Video Output Jack: Female PL-259 "UHF" type
- Power Input Jack: Removable waterproof miniplug (JOY type TP, female 3-conductor; mating power cord provided)
- Enclosure Cooling Input: 1/4 in. brass quick-disconnect nipple; mating coupler (Snap-tite BVHC4-4F) provided
- Lens Cooling Input: 1/2 in. brass quick-disconnect nipple; mating coupler (Snap-tite BVHC8-8F) provided
- Weight: 14 kg (30 lb) for air-cooled configuration (lens and camera)



MIRION
TECHNOLOGIES

Copyright ©2024 Mirion Technologies, Inc. or its affiliates. All rights reserved. Mirion, the Mirion logo, and other trade names of Mirion products listed herein are registered trademarks or trademarks of Mirion Technologies, Inc. or its affiliates in the United States and other countries. Third party trademarks mentioned are the property of their respective owners.

Specifications may vary according to system configuration. We reserve the right to modify or amend the information herein without prior warning. Please contact your Mirion representative for further information.

Mirion Technologies (IST) Ltd and Mirion Technologies (Imaging), LLC are ISO 9001:2015 certified companies (certificates available on request or at www.mirion.com).

Please note that the products and accessories described in this data sheet may be subject to UK export control or US re-export control. Please check with your authorized representative when enquiring about this product.