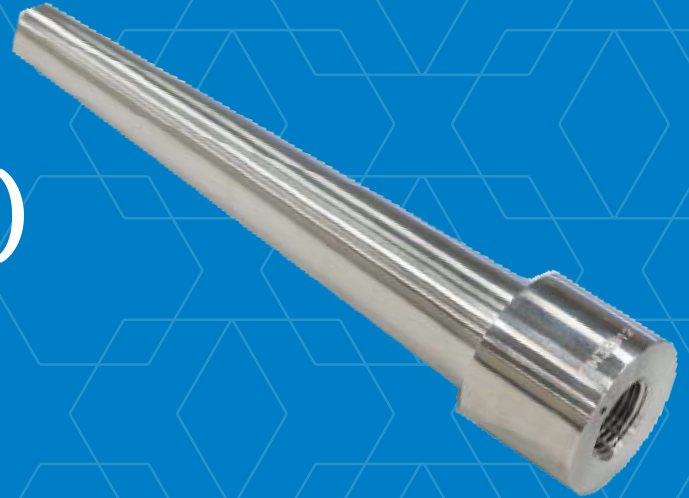




NUCLEAR CONTAINMENT SEALS

Thermowell (TW)

Temperature sensor protection



FEATURES

- TW material as required by the application. For example: Stainless steel, cast iron, and Monel
- Available in standard straight construction or tapered construction for heavy-duty service
- TW mounting can be by National Pipe Tapered (NPT) thread or socket weld interface
- TW interface thread to a temperature sensor can be by NPT thread, straight thread, BSP thread or other
- Protective brass plugs for mounting threads available

QUALIFICATIONS

- ASME BV Code, Section III, Sub-Sections NB, NC or ND for the specified ASME Code and Addenda
- "N" or "NPT" ASME Certification Mark Available
- ASME PTC 19.3
- PE Certified stress analysis available

APPLICATIONS

- ✓ Reactor Coolant Loop Fast Response Resistance Temperature Detector (RTD)
- ✓ Room Air Temperature
- ✓ Piping Systems
- ✓ Pump Bearing Temperature Sensor

DESIGN STYLES

- ✓ Reduced Tipped
- ✓ Stepped
- ✓ Protection Tubes
- ✓ Van Stone
- ✓ Straight
- ✓ Heavy Duty



Heavy-duty and tapered thermowell

